

Recombinant Human CD147/BSG Protein, C-His

Summary

Catalog No.	EHE14001
Alternative Names	Hepatoma-associated antigen, BSG, HAb18G, 5F7, TCSF, OK blood group antigen, Collagenase stimulatory factor, CD147, Leukocyte activation antigen M6, Basigin, Extracellular matrix metalloproteinase inducer, EMMPRIN, Tumor cell-derived collagenase stimulatory factor
Form	Lyophilized
Storage buffer	Lyophilized from a solution in PBS pH 7.4, 1mM EDTA, 4% Trehalose, 1% Mannitol.
Purity	>90% as determined by SDS-PAGE.
Applications	ELISA, Immunogen, SDS-PAGE, WB, Bioactivity testing in progress
Endotoxin level	Please contact with the lab for this information.
Expression system	Mammalian Cells
Accession	NP_940991.1
Protein length	Met1-His205
Nature	Recombinant
Predicted molecular weight	23.09 kDa
Stability and Storage	Use a manual defrost freezer and avoid repeated freeze thaw cycles. Store at 2 to 8°C for frequent use. Store at -20 to -80°C for twelve months from the date of receipt.
Reconstitution	Reconstitute in sterile water for a stock solution. A copy of datasheet will be provided with the products, please refer to it for details.

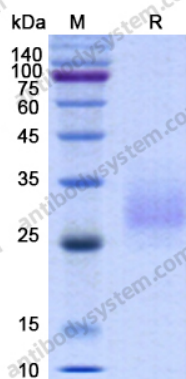
Recombinant Proteins & Antibodies

Species Homo sapiens (Human)

Shipping In general, proteins are provided as lyophilized powder/frozen liquid. They are shipped out with dry ice/blue ice unless customers require otherwise.

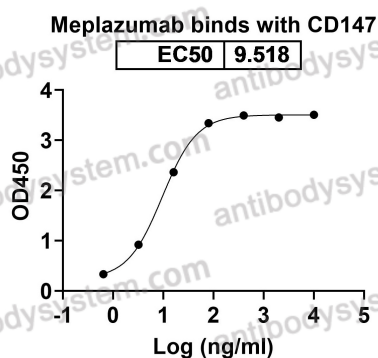
Note For research use only.

Data Image



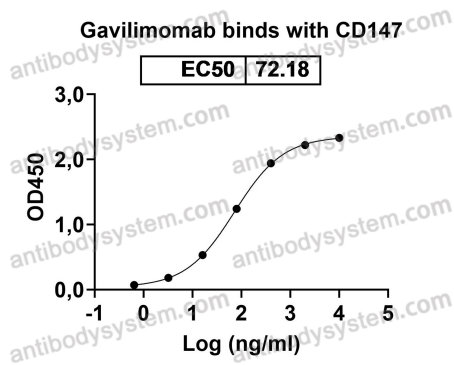
SDS-PAGE

SDS PAGE for recombinant Human CD147 / BSG

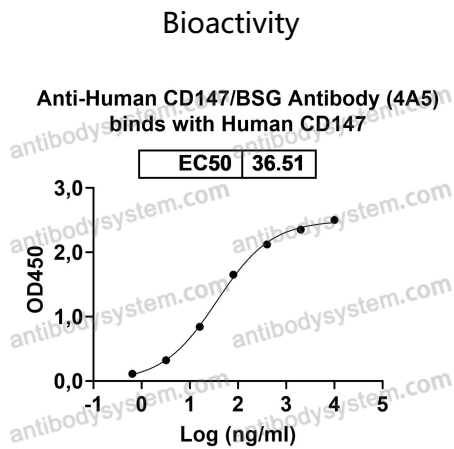


Bioactivity

Detects Meplazumab in indirect ELISAs.



Detects Gavilimomab in indirect ELISAs.



Detects Human CD147/BSG Antibody (4A5) in indirect ELISAs.