

Recombinant Human CLU Protein, N-His

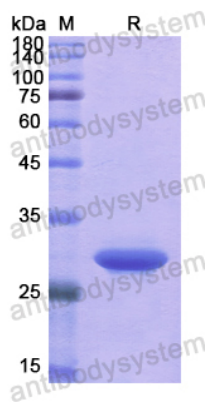
Summary

Catalog No.	YHC84101
Alternative Names	APOJ, ApoJalpha, NA1/NA2, Complement cytolysis inhibitor, Complement cytolysis inhibitor a chain, Ku70-binding protein 1, Testosterone-repressed prostate message 2, ApoJbeta, TRPM-2, Complement cytolysis inhibitor b chain, SGP-2, KUB1, Apolipoprotein J, Apo-J, Clusterin, Sulfated glycoprotein 2, Aging-associated gene 4 protein, CLI, CLU, Complement-associated protein SP-40,40
Form	Lyophilized
Storage buffer	Lyophilized from a solution in PBS pH 7.4, 0.02% NLS, 1mM EDTA, 4% Trehalose, 1% Mannitol.
Purity	>90% as determined by SDS-PAGE.
Applications	ELISA, Immunogen, SDS-PAGE, WB, Bioactivity testing in progress
Endotoxin level	Please contact with the lab for this information.
Expression system	E. coli
Accession	P10909
Protein length	Ser228-Glu449
Nature	Recombinant
Predicted molecular weight	28.19 kDa
Stability and Storage	Use a manual defrost freezer and avoid repeated freeze thaw cycles. Store at 2 to 8°C for frequent use. Store at -20 to -80°C for twelve months from the date of receipt.

Recombinant Proteins & Antibodies

Reconstitution	Reconstitute in sterile water for a stock solution. A copy of datasheet will be provided with the products, please refer to it for details.
Species	Homo sapiens (Human)
Shipping	In general, proteins are provided as lyophilized powder/frozen liquid. They are shipped out with dry ice/blue ice unless customers require otherwise.
Note	For research use only.

Data Image



SDS-PAGE

SDS PAGE for recombinant Human CLU protein