

# Recombinant LASV GPC Protein, N-His & C-TwinStrep

## Summary

---

<b>Catalog No.</b>	EVV04301
<b>Alternative Names</b>	Pre-glycoprotein polyprotein GP complex, Pre-GP-C, Stable signal peptide, SSP, Glycoprotein G1, GP1, Glycoprotein G2, GP2, GPC, GP-C
<b>Form</b>	Lyophilized
<b>Storage buffer</b>	Lyophilized from a solution in PBS pH 7.4, 1mM EDTA, 4% Trehalose, 1% Mannitol.
<b>Purity</b>	>80% as determined by SDS-PAGE.
<b>Applications</b>	ELISA, Immunogen, SDS-PAGE, WB, Bioactivity testing in progress
<b>Endotoxin level</b>	Please contact with the lab for this information.
<b>Expression system</b>	Insect Cells
<b>Accession</b>	P08669
<b>Protein length</b>	Met1-Gly424
<b>Nature</b>	Recombinant
<b>Predicted molecular weight</b>	55.20 kDa
<b>Stability and Storage</b>	Use a manual defrost freezer and avoid repeated freeze thaw cycles. Store at 2 to 8°C for frequent use. Store at -20 to -80°C for twelve months from the date of receipt.
<b>Reconstitution</b>	Reconstitute in sterile water for a stock solution.
<b>Species</b>	Lassa virus (LASV)

## Recombinant Proteins & Antibodies

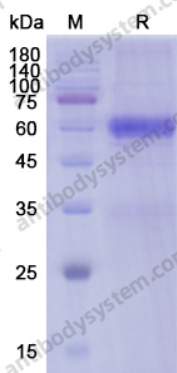
### Shipping

In general, proteins are provided as lyophilized powder/frozen liquid. They are shipped out with dry ice/blue ice unless customers require otherwise.

### Note

For research use only.

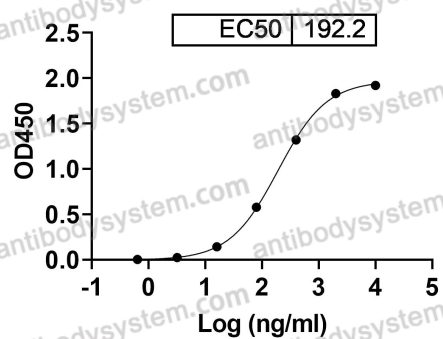
## Data Image



SDS-PAGE

SDS PAGE for recombinant LASV GPC

Clone# 12.1F binds with LASV GPC



Bioactivity

Detects LASV GPC Antibody ([RVV04306](#)) in indirect ELISAs.