

# Research Grade Lupartumab

## Summary

---

<b>Catalog No.</b>	DHB60001
<b>Alternative Names</b>	BAY 1112623, BAY 1129980, CAS: 1640971-88-5
<b>Clone ID</b>	Lupartumab
<b>Host species</b>	Human
<b>Species reactivity</b>	Human
<b>Form</b>	Liquid
<b>Storage buffer</b>	0.01M PBS, pH 7.4.
<b>Concentration</b>	1 mg/ml
<b>Purity</b>	>95% as determined by SDS-PAGE.
<b>Clonality</b>	Monoclonal
<b>Isotype</b>	IgG1-lambda
<b>Applications</b>	Research Grade Biosimilar
<b>Target</b>	C4.4A, Matrigel-induced gene C4 protein, GPI-anchored metastasis-associated protein C4.4A homolog, MIG-C4, LYPD3, Ly6/PLAUR domain-containing protein 3
<b>Purification</b>	Protein A/G purified from cell culture supernatant.
<b>Endotoxin level</b>	Please contact with the lab for this information.
<b>Expression system</b>	Mammalian Cells
<b>Accession</b>	O95274

## Stability and Storage

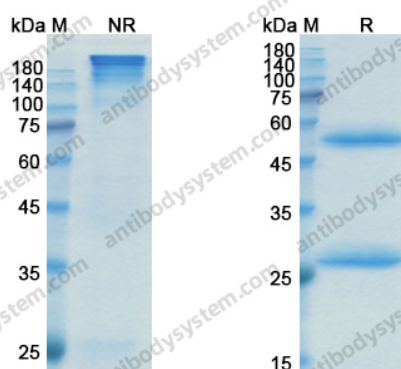
Use a manual defrost freezer and avoid repeated freeze-thaw cycles.

Store at 4°C short term (1-2 weeks). Store at -20°C 12 months. Store at -80°C long term.

## Note

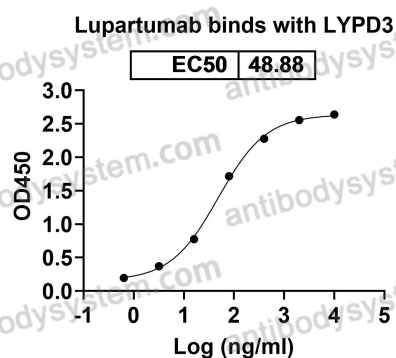
For research use only. Not suitable for clinical or therapeutic use.

## Data Image



SDS PAGE for Lupartumab

SDS-PAGE



Detects LYPD3 in indirect ELISAs.

Bioactivity