

# Research Grade Lifastuzumab

## Summary

---

<b>Catalog No.</b>	DHB65401
<b>Alternative Names</b>	DNIB0600A (conjugate), MNIB2126A (non conjugate), CAS: 1615697-16-9
<b>Clone ID</b>	Lifastuzumab
<b>Host species</b>	Humanized
<b>Species reactivity</b>	Human
<b>Form</b>	Liquid
<b>Storage buffer</b>	0.01M PBS, pH 7.4.
<b>Concentration</b>	1 mg/ml
<b>Purity</b>	>95% as determined by SDS-PAGE.
<b>Clonality</b>	Monoclonal
<b>Isotype</b>	IgG1-kappa
<b>Applications</b>	Research Grade Biosimilar
<b>Target</b>	Sodium/phosphate cotransporter 2B, Na(+)-dependent phosphate cotransporter 2B, Na(+)/Pi cotransporter 2B, Sodium-dependent phosphate transport protein 2B, NaPi3b, NaPi-2b, SLC34A2, Solute carrier family 34 member 2, Sodium-phosphate transport protein 2B
<b>Purification</b>	Protein A/G purified from cell culture supernatant.
<b>Endotoxin level</b>	Please contact with the lab for this information.
<b>Expression system</b>	Mammalian Cells
<b>Accession</b>	O95436

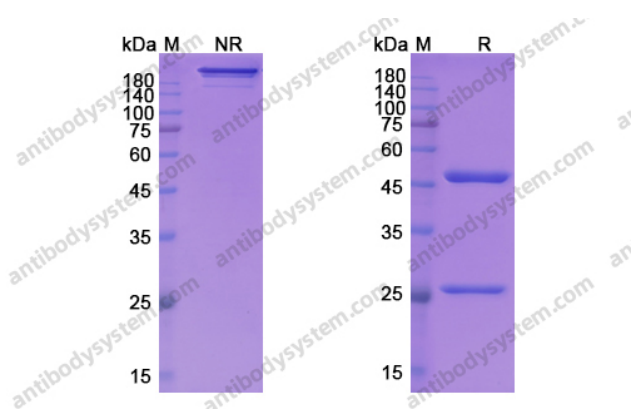
**Stability and Storage**

Use a manual defrost freezer and avoid repeated freeze-thaw cycles.

Store at 4°C short term (1-2 weeks). Store at -20°C 12 months. Store at -80°C long term.

**Note**

For research use only. Not suitable for clinical or therapeutic use.

**Data Image**

SDS-PAGE

SDS PAGE for Lifastuzumab