

# Recombinant Human MLST8 Protein, N-His

## Summary

---

|                                   |   |
|-----------------------------------|---|
| <b>Catalog No.</b>                | YHJ50101  |
| <b>Alternative Names</b>          | GBL, TORC subunit LST8, Mammalian lethal with SEC13 protein 8, G protein beta subunit-like, Gable, Protein GbetaL, mLST8, LST8, MLST8, Target of rapamycin complex subunit LST8 |
| <b>Form</b>                       | Lyophilized   |
| <b>Storage buffer</b>             | Lyophilized from a solution in PBS pH 7.4, 0.02% NLS, 1mM EDTA, 4% Trehalose, 1% Mannitol.  |
| <b>Purity</b>                     | >90% as determined by SDS-PAGE.   |
| <b>Applications</b>               | ELISA, Immunogen, SDS-PAGE, WB, Bioactivity testing in progress   |
| <b>Endotoxin level</b>            | Please contact with the lab for this information.   |
| <b>Expression system</b>          | E. coli   |
| <b>Accession</b>                  | Q9BVC4  |
| <b>Protein length</b>             | Tyr68-Trp247  |
| <b>Nature</b>                     | Recombinant   |
| <b>Predicted molecular weight</b> | 22.32 kDa   |
| <b>Stability and Storage</b>      | Use a manual defrost freezer and avoid repeated freeze thaw cycles. Store at 2 to 8°C for frequent use. Store at -20 to -80°C for twelve months from the date of receipt.       |
| <b>Reconstitution</b>             | Reconstitute in sterile water for a stock solution. A copy of datasheet will be provided with the products, please refer to it for details.                                     |
| <b>Species</b>                    | Homo sapiens (Human)  |

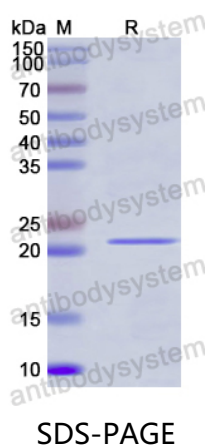
## Recombinant Proteins &amp; Antibodies

**Shipping**

In general, proteins are provided as lyophilized powder/frozen liquid. They are shipped out with dry ice/blue ice unless customers require otherwise.

**Note**

For research use only.

**Data Image**

SDS PAGE for recombinant Human MLST8 protein