

# Research Grade Imalumab

## Summary

---

<b>Catalog No.</b>	DHD03401
<b>Alternative Names</b>	BAX069, BAX69, CAS: 1430205-07-4
<b>Clone ID</b>	Imalumab
<b>Host species</b>	Human
<b>Species reactivity</b>	Human
<b>Form</b>	Liquid
<b>Storage buffer</b>	100 mM Pro-Ac, 20 mM Arg, pH 5.0
<b>Concentration</b>	5.69 mg/ml
<b>Purity</b>	>95% as determined by SDS-PAGE.
<b>Clonality</b>	Monoclonal
<b>Isotype</b>	IgG1-kappa
<b>Applications</b>	Research Grade Biosimilar
<b>Target</b>	MIF, L-dopachrome isomerase, L-dopachrome tautomerase, GIF, Macrophage migration inhibitory factor, MMIF, Phenylpyruvate tautomerase, Glycosylation-inhibiting factor, GLIF
<b>Purification</b>	Protein A/G purified from cell culture supernatant.
<b>Endotoxin level</b>	Please contact with the lab for this information.
<b>Expression system</b>	Mammalian Cells
<b>Accession</b>	P14174

## Stability and Storage

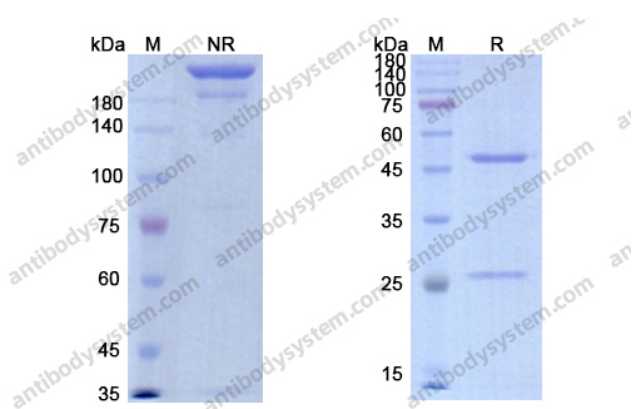
Use a manual defrost freezer and avoid repeated freeze-thaw cycles.

Store at 4°C short term (1-2 weeks). Store at -20°C 12 months. Store at -80°C long term.

## Note

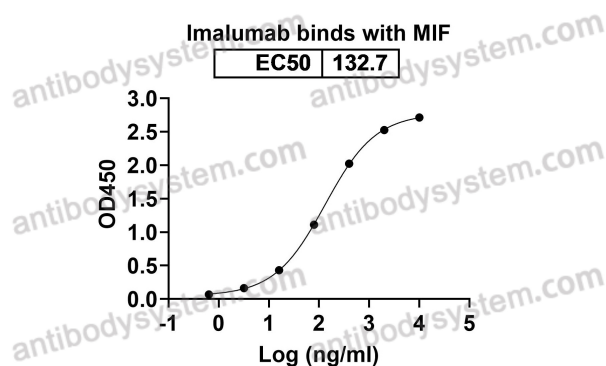
For research use only. Not suitable for clinical or therapeutic use.

## Data Image



SDS PAGE for Imalumab

SDS-PAGE



Bioactivity

Detects MIF/GIF in indirect ELISAs.