

Recombinant Human GLG1 Protein, N-His

Summary

Catalog No.	YHJ34501
Alternative Names	CFR1, Golgi sialoglycoprotein MG-160, ESL-1, Golgi apparatus protein 1, E-selectin ligand 1, MG160, GLG1, CFR-1, Cysteine-rich fibroblast growth factor receptor, ESL1
Form	Lyophilized
Storage buffer	Lyophilized from a solution in PBS pH 7.4, 0.02% NLS, 1mM EDTA, 4% Trehalose, 1% Mannitol.
Purity	>90% as determined by SDS-PAGE.
Applications	ELISA, Immunogen, SDS-PAGE, WB, Bioactivity testing in progress
Endotoxin level	Please contact with the lab for this information.
Expression system	E. coli
Accession	Q92896
Protein length	Lys1048-Asn1145
Nature	Recombinant
Predicted molecular weight	13.31 kDa
Stability and Storage	Use a manual defrost freezer and avoid repeated freeze thaw cycles. Store at 2 to 8°C for frequent use. Store at -20 to -80°C for twelve months from the date of receipt.
Reconstitution	Reconstitute in sterile water for a stock solution. A copy of datasheet will be provided with the products, please refer to it for details.
Species	Homo sapiens (Human)

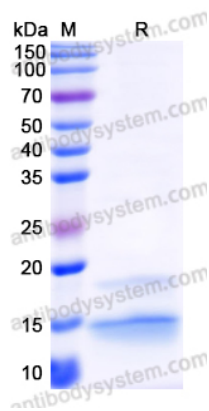
Shipping

In general, proteins are provided as lyophilized powder/frozen liquid. They are shipped out with dry ice/blue ice unless customers require otherwise.

Note

For research use only.

Data Image



SDS-PAGE

SDS PAGE for recombinant Human GLG1 protein