

Research Grade Pasotuxizumab

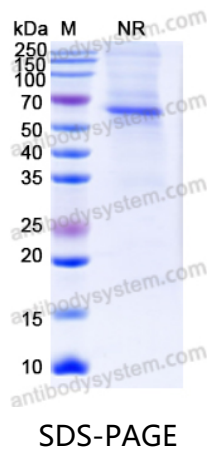
Summary

Catalog No.	DHG01301
Alternative Names	Bispecific, BAY 2010112, BITE MT112, MT-112, CAS: 1442657-12-6
Clone ID	Pasotuxizumab
Host species	Humanized
Species reactivity	Human
Form	Liquid
Storage buffer	0.01M PBS, pH 7.4.
Concentration	1 mg/ml
Purity	>95% as determined by SDS-PAGE.
Clonality	Monoclonal
Isotype	(scFv-heavy-kappa)-(scFv-heavy-lambda)
Applications	Research Grade Biosimilar
Target	NAALAD1, Prostate-specific membrane antigen, NAALADase I, PSMA, PSM, Pteroylpoly-gamma-glutamate carboxypeptidase, Glutamate carboxypeptidase 2, N-acetylated-alpha-linked acidic dipeptidase I, Glutamate carboxypeptidase II, FOLH1, FGCP, FOLH, Folylpoly-gamma-glutamate carboxypeptidase, Folate hydrolase 1, GCPII, Membrane glutamate carboxypeptidase, Cell growth-inhibiting gene 27 protein, mGCP, T3E, T-cell surface antigen T3/Leu-4 epsilon chain, CD3e, CD3E, T-cell surface glycoprotein CD3 epsilon chain
Purification	Purified by Nickel column.

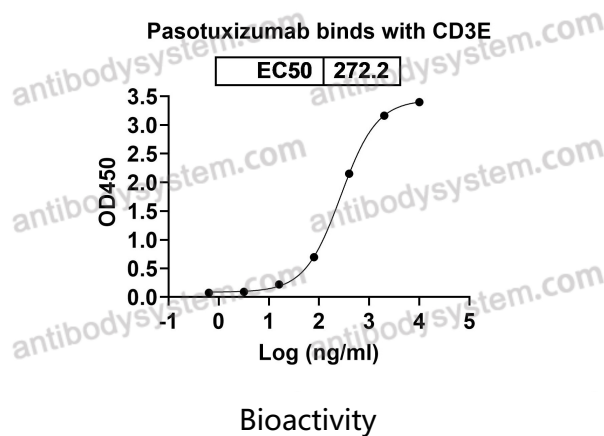
Recombinant Proteins & Antibodies

Endotoxin level	Please contact with the lab for this information.
Expression system	Mammalian Cells
Accession	Q04609 & P07766
Stability and Storage	Use a manual defrost freezer and avoid repeated freeze-thaw cycles. Store at 4°C short term (1-2 weeks). Store at -20°C 12 months. Store at -80°C long term.
Note	For research use only. Not suitable for clinical or therapeutic use.

Data Image



SDS PAGE for Pasotuxizumab



Detects CD3E in indirect ELISAs.