

# Research Grade Sofituzumab

## Summary

---

|                           |  |
|---------------------------|--|
| <b>Catalog No.</b>        | DHJ31004   |
| <b>Alternative Names</b>  | DMUC5754A (conjugate), MMUC1206A (nonconjugate), CAS: 1615692-28-8   |
| <b>Clone ID</b>           | Sofituzumab  |
| <b>Host species</b>       | Humanized  |
| <b>Species reactivity</b> | Human  |
| <b>Form</b>               | Liquid   |
| <b>Storage buffer</b>     | 0.01M PBS, pH 7.4.   |
| <b>Concentration</b>      | 1 mg/ml  |
| <b>Purity</b>             | >95% as determined by SDS-PAGE.  |
| <b>Clonality</b>          | Monoclonal   |
| <b>Isotype</b>            | IgG1-kappa   |
| <b>Applications</b>       | Research Grade Biosimilar  |
| <b>Target</b>             | Mucin-16, CA-125, Ovarian carcinoma antigen CA125, CA125, MUC-16, Ovarian cancer-related tumor marker CA125, MUC16 |
| <b>Purification</b>       | Protein A/G purified from cell culture supernatant.  |
| <b>Endotoxin level</b>    | Please contact with the lab for this information.  |
| <b>Expression system</b>  | Mammalian Cells  |
| <b>Accession</b>          | Q8WXI7   |

## Stability and Storage

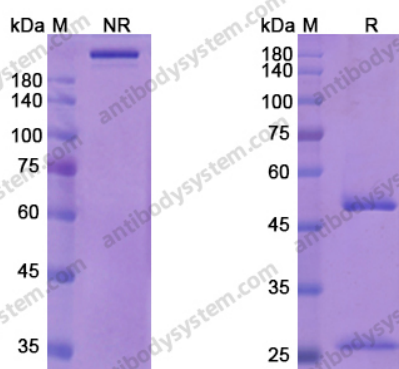
Use a manual defrost freezer and avoid repeated freeze-thaw cycles.

Store at 4°C short term (1-2 weeks). Store at -20°C 12 months. Store at -80°C long term.

## Note

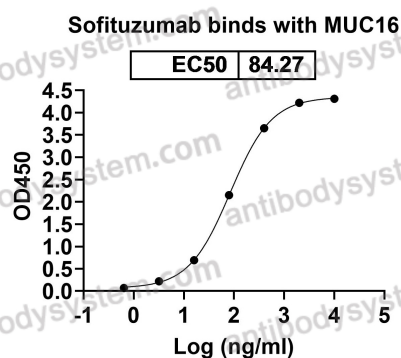
For research use only. Not suitable for clinical or therapeutic use.

## Data Image



SDS PAGE for Sofituzumab

SDS-PAGE



Detects MUC16/CA125 in indirect ELISAs.

Bioactivity