

Research Grade Emibetuzumab

Summary

Catalog No.	DHC34201
Alternative Names	LA480, LY-2875358, CAS: 1365287-97-3
Clone ID	Emibetuzumab
Host species	Humanized
Species reactivity	Human
Form	Liquid
Storage buffer	0.01M PBS, pH 7.4.
Concentration	1 mg/ml
Purity	>95% as determined by SDS-PAGE.
Clonality	Monoclonal
Isotype	IgG4-kappa
Applications	Research Grade Biosimilar
Target	Tyrosine-protein kinase Met, Hepatocyte growth factor receptor, Proto-oncogene c-Met, Scatter factor receptor, HGF receptor, SF receptor, HGF/SF receptor, MET
Purification	Protein A/G purified from cell culture supernatant.
Endotoxin level	Please contact with the lab for this information.
Expression system	Mammalian Cells
Accession	P08581

Stability and Storage

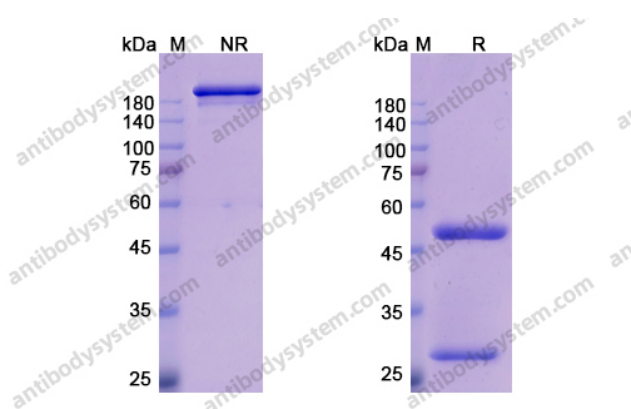
Use a manual defrost freezer and avoid repeated freeze-thaw cycles.

Store at 4°C short term (1-2 weeks). Store at -20°C 12 months. Store at -80°C long term.

Note

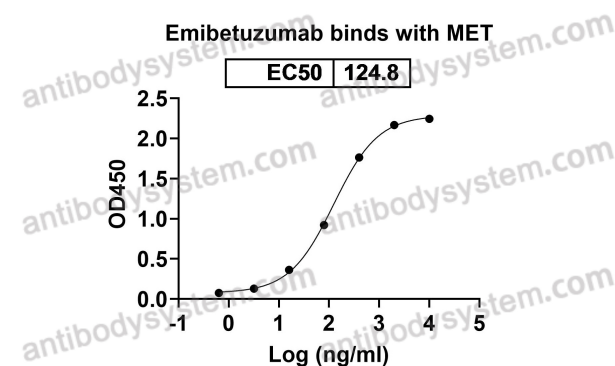
For research use only. Not suitable for clinical or therapeutic use.

Data Image



SDS PAGE for Emibetuzumab

SDS-PAGE

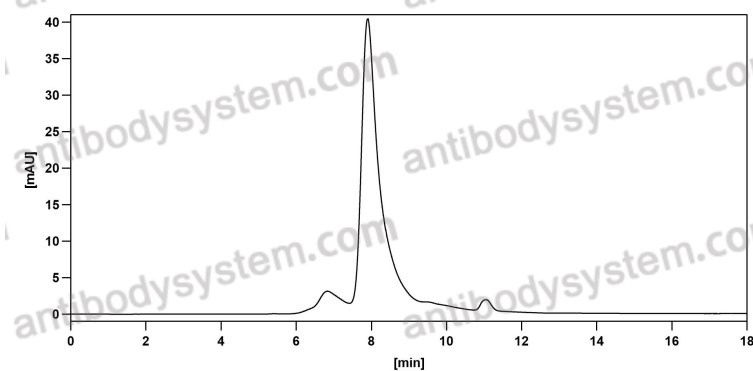


Detects MET/c-Met/HGFR in indirect ELISAs.

Bioactivity



Recombinant Proteins & Antibodies



The purity of this product is >95% as determined by SEC-HPLC.

SEC-HPLC