

Research Grade Lumretuzumab

Summary

Catalog No.	DHD48402
Alternative Names	RG-7116, RO5479599, CAS: 1448327-63-6
Clone ID	Lumretuzumab
Host species	Humanized
Species reactivity	Human
Form	Liquid
Storage buffer	0.01M PBS, pH 7.4.
Concentration	1 mg/ml
Purity	>95% as determined by SDS-PAGE.
Clonality	Monoclonal
Isotype	IgG1-kappa
Applications	Research Grade Biosimilar
Target	ERBB3, HER3, Proto-oncogene-like protein c-ErbB-3, Tyrosine kinase-type cell surface receptor HER3, Receptor tyrosine-protein kinase erbB-3
Purification	Protein A/G purified from cell culture supernatant.
Endotoxin level	Please contact with the lab for this information.
Expression system	Mammalian Cells
Accession	P21860

Stability and Storage

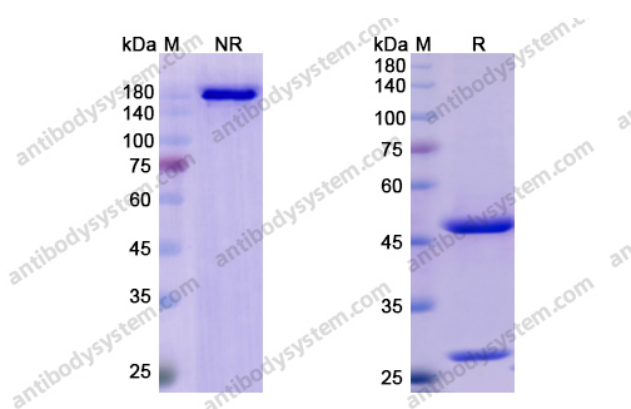
Use a manual defrost freezer and avoid repeated freeze-thaw cycles.

Store at 4°C short term (1-2 weeks). Store at -20°C 12 months. Store at -80°C long term.

Note

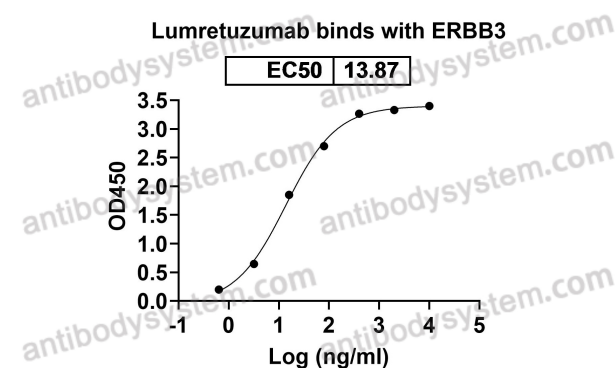
For research use only. Not suitable for clinical or therapeutic use.

Data Image



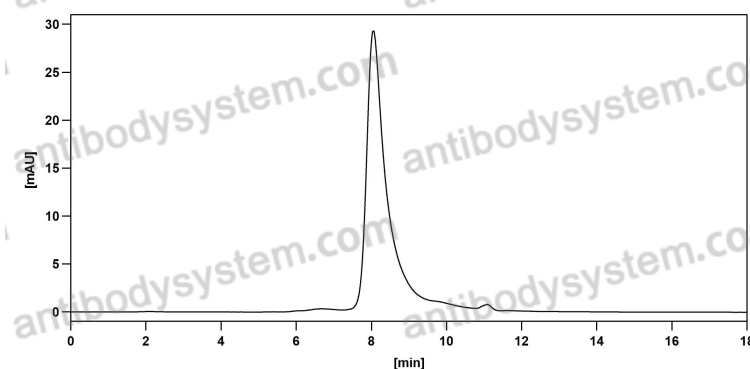
SDS PAGE for Lumretuzumab

SDS-PAGE



Detects ERBB3/HER3 in indirect ELISAs.

Bioactivity



The purity of this product is >95% as determined by SEC-HPLC.

SEC-HPLC