

# Recombinant Human CD47/MER6 Protein, C-His

## Summary

---

<b>Catalog No.</b>	EHG17601
<b>Alternative Names</b>	Leukocyte surface antigen CD47, CD47, Antigenic surface determinant protein OA3, IAP, Integrin-associated protein, Protein MER6, MER6
<b>Form</b>	Lyophilized
<b>Storage buffer</b>	Lyophilized from a solution in PBS pH 7.4, 1mM EDTA, 4% Trehalose, 1% Mannitol.
<b>Purity</b>	>90% as determined by SDS-PAGE.
<b>Applications</b>	ELISA, Immunogen, SDS-PAGE, WB, Bioactivity testing in progress
<b>Endotoxin level</b>	Please contact with the lab for this information.
<b>Expression system</b>	Mammalian Cells
<b>Accession</b>	Q08722
<b>Protein length</b>	Met1-Glu141
<b>Nature</b>	Recombinant
<b>Predicted molecular weight</b>	16.64 kDa
<b>Stability and Storage</b>	Use a manual defrost freezer and avoid repeated freeze thaw cycles. Store at 2 to 8°C for frequent use. Store at -20 to -80°C for twelve months from the date of receipt.
<b>Reconstitution</b>	Reconstitute in sterile water for a stock solution. A copy of datasheet will be provided with the products, please refer to it for details.
<b>Species</b>	Homo sapiens (Human)

## Shipping

In general, proteins are provided as lyophilized powder/frozen liquid. They are shipped out with dry ice/blue ice unless customers require otherwise.

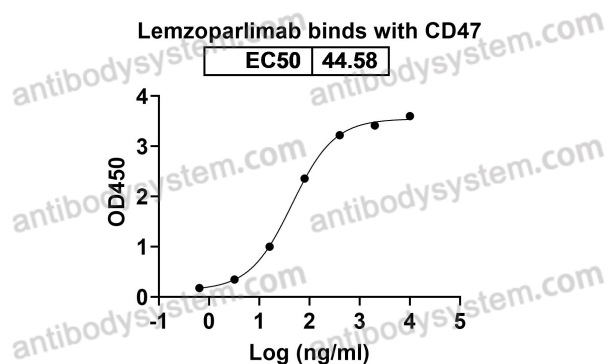
## Note

For research use only.

## Data Image



SDS PAGE for recombinant Human CD47 / MER6

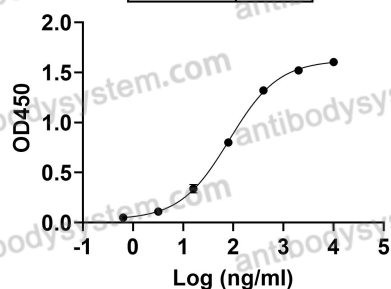


Detects Lemzoparlimab in indirect ELISAs.

Bioactivity

**Anti-Human CD47/MER6 Antibody (B6H12)**  
binds with CD47

EC50 83.20

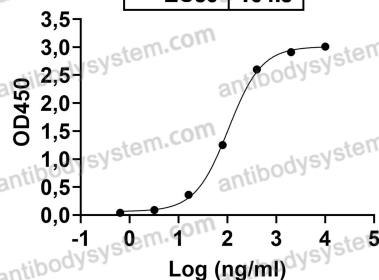


Bioactivity

Detects Human CD47/MER6 Antibody (B6H12) in indirect ELISAs.

**Ligufalimab binds with CD47**

EC50 104.8

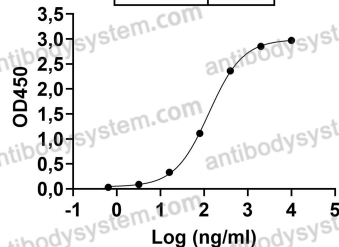


Bioactivity

Detects Ligufalimab in indirect ELISAs.

**Anti-Human CD47/MER6 Antibody (CC-90002)**  
binds with Human CD47

EC50 129.0



Bioactivity

Detects Human CD47/MER6(CC-90002) in indirect ELISAs.