

Research Grade Cinpanemab

Summary

Catalog No.	DHE22001
Alternative Names	BIIB054,BIIB-054, CAS: 2094516-02-4
Clone ID	Cinpanemab
Host species	Humanized
Species reactivity	Human
Form	Liquid
Storage buffer	0.01M PBS, pH 7.4.
Concentration	1 mg/ml
Purity	>95% as determined by SDS-PAGE.
Clonality	Monoclonal
Isotype	IgG1-lambda
Applications	Research Grade Biosimilar
Target	Alpha-synuclein, PARK1, Non-A4 component of amyloid precursor, NACP, Non-A beta component of AD amyloid, SNCA
Purification	Protein A/G purified from cell culture supernatant.
Endotoxin level	Please contact with the lab for this information.
Expression system	Mammalian Cells
Accession	P37840

Stability and Storage

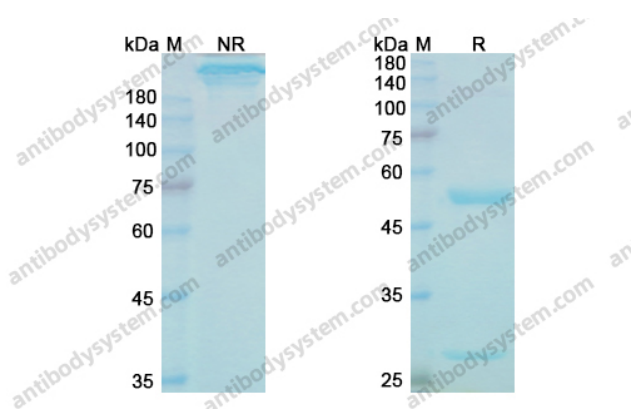
Use a manual defrost freezer and avoid repeated freeze-thaw cycles.

Store at 4°C short term (1-2 weeks). Store at -20°C 12 months. Store at -80°C long term.

Note

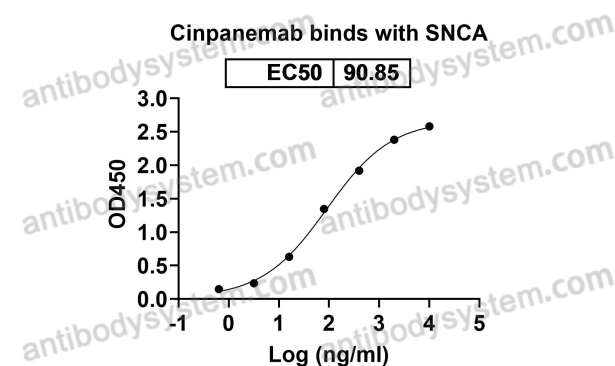
For research use only. Not suitable for clinical or therapeutic use.

Data Image



SDS PAGE for Cinpanemab

SDS-PAGE

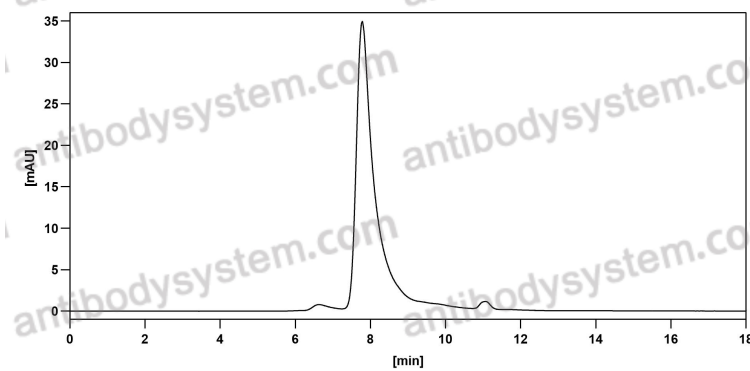


Detects SNCA in indirect ELISAs.

Bioactivity



Recombinant Proteins & Antibodies



The purity of this product is >95% as determined by SEC-HPLC.

SEC-HPLC