

# Research Grade Bepranemab

## Summary

---

<b>Catalog No.</b>	DHC82405
<b>Alternative Names</b>	UCB-0107, UCB0107, CAS: 2244960-75-4
<b>Clone ID</b>	Bepranemab
<b>Host species</b>	Humanized
<b>Species reactivity</b>	Human
<b>Form</b>	Liquid
<b>Storage buffer</b>	0.01M PBS, pH 7.4.
<b>Concentration</b>	2.27 mg/ml
<b>Purity</b>	>95% as determined by SDS-PAGE.
<b>Clonality</b>	Monoclonal
<b>Isotype</b>	IgG4-kappa
<b>Applications</b>	Research Grade Biosimilar
<b>Target</b>	MAPTL, Paired helical filament-tau, MTBT1, Microtubule-associated protein tau, TAU, Neurofibrillary tangle protein, MAPT, PHF-tau
<b>Purification</b>	Protein A/G purified from cell culture supernatant.
<b>Endotoxin level</b>	Please contact with the lab for this information.
<b>Expression system</b>	Mammalian Cells
<b>Accession</b>	P10636

## Recombinant Proteins &amp; Antibodies

**Stability and Storage**

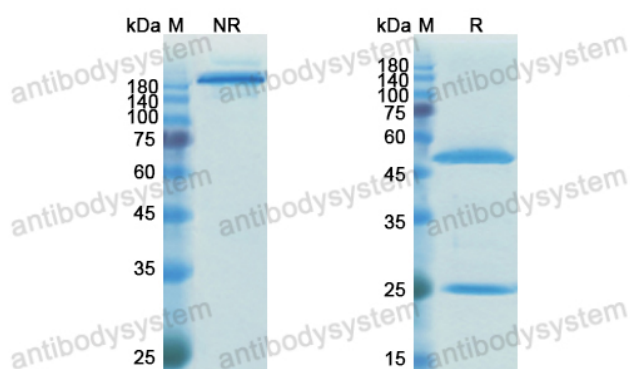
Use a manual defrost freezer and avoid repeated freeze-thaw cycles.

Store at 4°C short term (1-2 weeks). Store at -20°C 12 months. Store at -80°C long term.

**Note**

For research use only. Not suitable for clinical or therapeutic use.

## Data Image



SDS PAGE for Bepranemab

SDS-PAGE