

# Research Grade Solanezumab

## Summary

---

<b>Catalog No.</b>	DHC12505
<b>Alternative Names</b>	LY2062430, CAS: 955085-14-0
<b>Clone ID</b>	Solanezumab
<b>Host species</b>	Humanized
<b>Species reactivity</b>	Human
<b>Form</b>	Liquid
<b>Storage buffer</b>	0.01M PBS, pH 7.4.
<b>Concentration</b>	1.8 mg/ml
<b>Purity</b>	>95% as determined by SDS-PAGE.
<b>Clonality</b>	Monoclonal
<b>Isotype</b>	IgG1-kappa
<b>Applications</b>	Research Grade Biosimilar
<b>Target</b>	AICD-57, A4, Beta-CTF, Protease nexin-II, Gamma-CTF(50), ABPP, S-APP-beta, APP, Abeta40, Abeta42, AID(59), Amyloid intracellular domain 59, AID(57), S-APP-alpha, Gamma-CTF(59), Beta-secretase C-terminal fragment, Amyloid-beta precursor protein, Amyloid precursor protein, Beta-APP42, PreA4, Alzheimer disease amyloid protein, APPI, PN-II, AICD-59, Alpha-secretase C-terminal fragment, Amyloid-beta A4 protein, Amyloid intracellular domain 57, CVAP, Amyloid intracellular domain 50, Beta-APP40, AD1, Cerebral vascular amyloid peptide, AID(50), Alpha-CTF, Gamma-CTF(57), AICD-50
<b>Purification</b>	Protein A/G purified from cell culture supernatant.

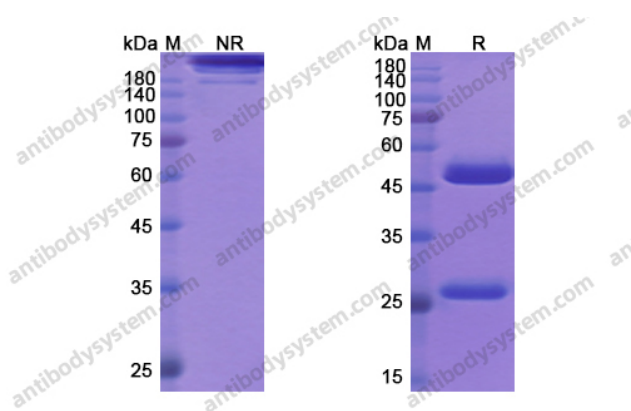
## Recombinant Proteins &amp; Antibodies

Endotoxin level	Please contact with the lab for this information.
Expression system	Mammalian Cells
Accession	P05067
Stability and Storage	Use a manual defrost freezer and avoid repeated freeze-thaw cycles. Store at 4°C short term (1-2 weeks). Store at -20°C 12 months. Store at -80°C long term.
Note	For research use only. Not suitable for clinical or therapeutic use.

## Description

Solanezumab is a humanized monoclonal IgG1 antibody directed against the mid-domain of the A $\beta$  peptide. It recognizes soluble monomeric, not fibrillar, A $\beta$ . Solanezumab (formerly known as LY2062430) is a monoclonal antibody being developed by Lilly as a potential therapy for people with mild cognitive impairment caused by Alzheimer's disease.

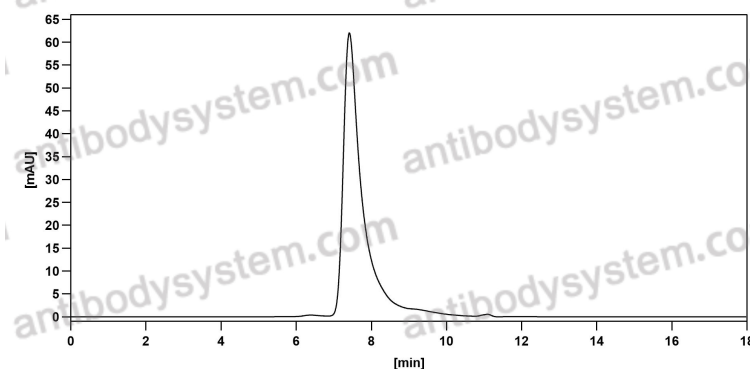
## Data Image



SDS-PAGE

SDS PAGE for Solanezumab

Recombinant Proteins & Antibodies



The purity of this product is >95% as determined by SEC-HPLC.

SEC-HPLC