

# Research Grade Losatuxizumab

## Summary

---

<b>Catalog No.</b>	DHB86913
<b>Alternative Names</b>	ABT-806, PR-1316749, CAS: 1801544-27-3
<b>Clone ID</b>	Losatuxizumab
<b>Host species</b>	Humanized
<b>Species reactivity</b>	Human
<b>Form</b>	Liquid
<b>Storage buffer</b>	0.01M PBS, pH 7.4.
<b>Concentration</b>	1 mg/ml
<b>Purity</b>	>95% as determined by SDS-PAGE.
<b>Clonality</b>	Monoclonal
<b>Isotype</b>	IgG1-kappa
<b>Applications</b>	Research Grade Biosimilar
<b>Target</b>	HER1, Receptor tyrosine-protein kinase erbB-1, Proto-oncogene c-ErbB-1, Epidermal growth factor receptor, EGFR, ERBB1, ERBB
<b>Purification</b>	Protein A/G purified from cell culture supernatant.
<b>Endotoxin level</b>	Please contact with the lab for this information.
<b>Expression system</b>	Mammalian Cells
<b>Accession</b>	P00533

## Recombinant Proteins & Antibodies

### Stability and Storage

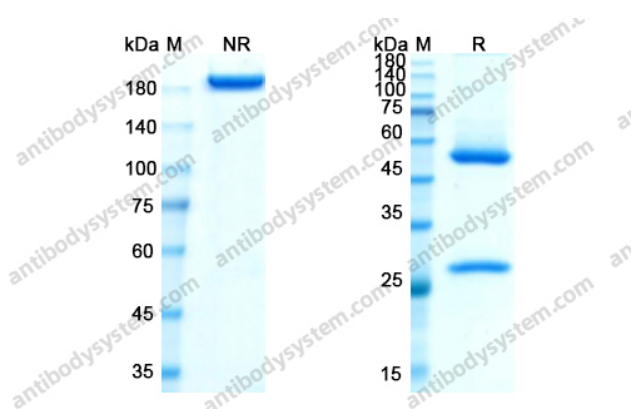
Use a manual defrost freezer and avoid repeated freeze-thaw cycles.

Store at 4°C short term (1-2 weeks). Store at -20°C 12 months. Store at -80°C long term.

### Note

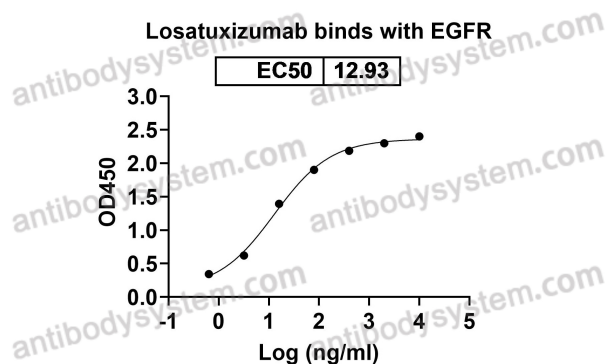
For research use only. Not suitable for clinical or therapeutic use.

## Data Image



SDS PAGE for Losatuxizumab

SDS-PAGE



Detects EGFR/ERBB1/HER1 in indirect ELISAs.

Bioactivity