

Recombinant Human SNCA Protein, N-His

Summary

Catalog No.	YHE22001
Alternative Names	Alpha-synuclein, PARK1, Non-A4 component of amyloid precursor, NACP, Non-A beta component of AD amyloid, SNCA
Form	Lyophilized
Storage buffer	Lyophilized from a solution in PBS pH 7.4, 0.02% NLS, 1mM EDTA, 4% Trehalose, 1% Mannitol.
Purity	>90% as determined by SDS-PAGE.
Applications	ELISA, Immunogen, SDS-PAGE, WB, Bioactivity testing in progress
Endotoxin level	Please contact with the lab for this information.
Expression system	E. coli
Accession	P37840
Protein length	Met1-Ala140
Nature	Recombinant
Predicted molecular weight	16.77 kDa
Stability and Storage	Use a manual defrost freezer and avoid repeated freeze thaw cycles. Store at 2 to 8°C for frequent use. Store at -20 to -80°C for twelve months from the date of receipt.
Reconstitution	Reconstitute in sterile water for a stock solution. A copy of datasheet will be provided with the products, please refer to it for details.
Species	Homo sapiens (Human)

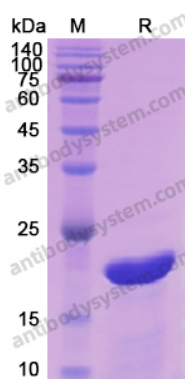
Shipping

In general, proteins are provided as lyophilized powder/frozen liquid. They are shipped out with dry ice/blue ice unless customers require otherwise.

Note

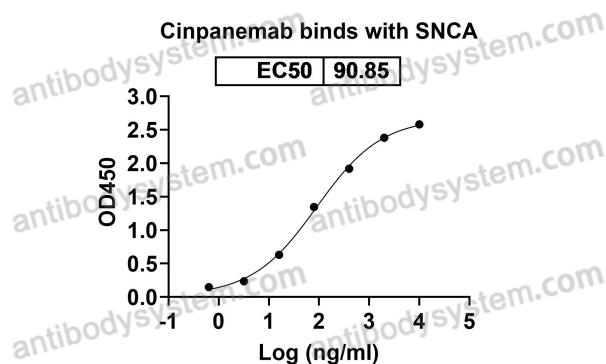
For research use only.

Data Image



SDS-PAGE

SDS PAGE for recombinant Human SNCA

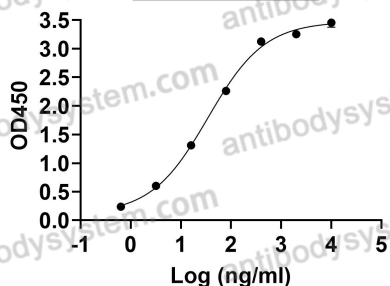


Bioactivity

Detects Cinpanemab in indirect ELISAs.

Exidavnemab binds with SNCA

EC50 34.76

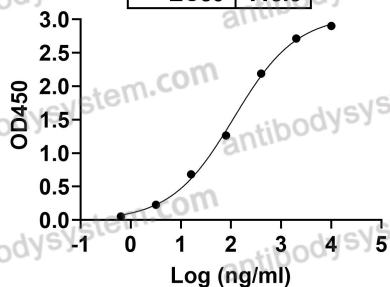


Bioactivity

Detects Exidavnemab in indirect ELISAs.

Prasinezumab binds with SNCA

EC50 113.6

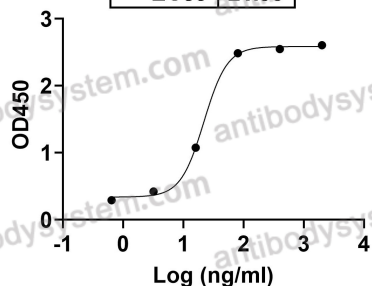


Bioactivity

Detects Prasinezumab in indirect ELISAs.

Anti-Human SNCA (MEDI1341)
binds with SNCA

EC50 21.90



Bioactivity

Detects MEDI1341 in indirect ELISAs.