

Anti-SNAP-25 (BoTox-A Cleaved) Antibody (4F3-2C1)

Summary

Catalog No.	RHF38106
Clone ID	4F3-2C1
Host species	Mouse
Species reactivity	Human
Form	Liquid
Storage buffer	0.01M PBS, pH 7.4.
Concentration	1.61 mg/ml
Purity	>95% as determined by SDS-PAGE.
Clonality	Monoclonal
Isotype	IgG2b
Applications	ELISA, IHC, IP, Cell based assay
Target	SNAP25, Super protein, SUP, Synaptosomal-associated protein 25, SNAP, SNAP-25, Synaptosomal-associated 25 kDa protein, SNAP-25 (BoTox-A Cleaved)
Purification	Protein A/G purified from cell culture supernatant.
Endotoxin level	Please contact with the lab for this information.
Accession	P60880

Recombinant Proteins & Antibodies

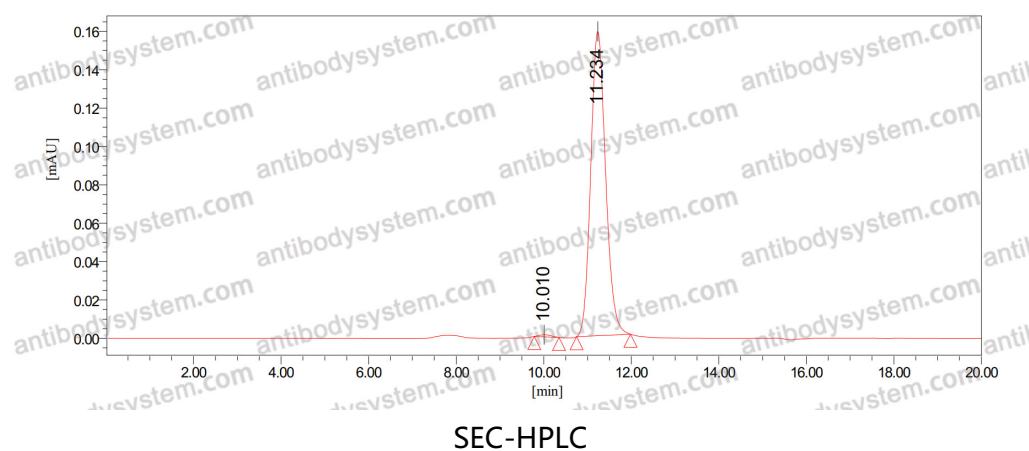
Stability and Storage

Use a manual defrost freezer and avoid repeated freeze-thaw cycles.

Store at 4°C short term (1-2 weeks). Store at -20°C 12 months. Store at -80°C long term.

Note

For research use only.

Data Image

The purity of this product is >95% as determined by SEC-HPLC.