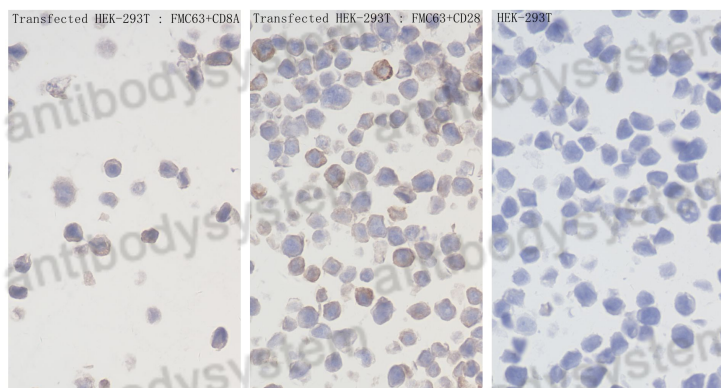


Anti-GGGGS Linker Antibody (R4E06)

Summary

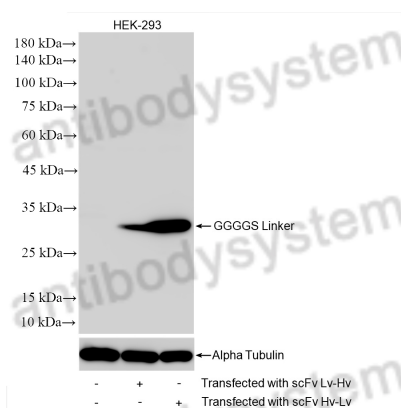
Catalog No.	RGP16001
Clone ID	R4E06
Host species	Rabbit
Tested applications	ELISA: 1:5000-1:10000, IF: 1:2000-1:8000, IHC: 1:40000-1:160000, WB: 1:1000-1:6000, FCM: 0.25µg per 10 ⁶ cells in 100µl suspension
Species reactivity	General
Form	Liquid
Storage buffer	PBS with 0.09% sodium azide
Concentration	1 mg/ml
Purity	>95% as determined by SDS-PAGE.
Clonality	Monoclonal
Isotype	IgG
Applications	ELISA, FCM, ICC, IF, IHC, WB
Target	G4S, G4S link, G4S Linker, GGGGS, GS Linker
Purification	Protein A/G purified from cell culture supernatant.
Endotoxin level	Please contact with the lab for this information.
Stability and Storage	Store at 2-8 °C 12 months.
Note	For research use only.

Data Image



Immunohistochemical analysis of paraffin-embedded Transfected HEK-293T cells slide using RGP16001 (GGGGS Linker antibody) at dilution of 1:80000.

Immunocytochemistry



Western Blot

Various lysates were subjected to SDS PAGE followed by western blot with RGP16001 (GGGGS Linker antibody) at dilution of 1:3000 incubated at room temperature for 1.5 hours.