

Anti-MARV GP/Envelope glycoprotein Antibody (SAb2271)

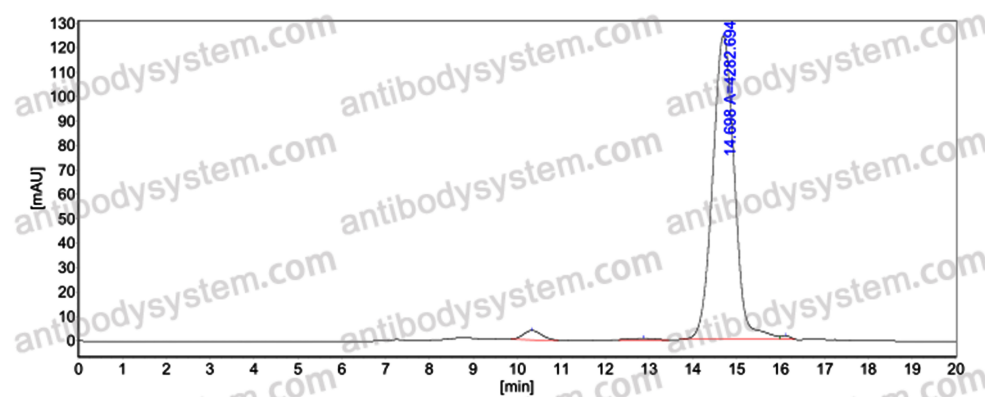
Summary

| | |
|------------------------------|-----------------------------------------------------------------------------------------------------------------------------------------------------------------|
| Catalog No. | RVV24305 |
| Clone ID | SAb2271 |
| Host species | Human |
| Species reactivity | Lake Victoria marburgvirus (strain Ravn-87) (MARV) (Marburg virus (strainKenya/Ravn/1987)) |
| Form | Liquid |
| Storage buffer | 0.01M PBS, pH 7.4. |
| Concentration | 1 mg/ml |
| Purity | >95% as determined by SDS-PAGE. |
| Clonality | Monoclonal |
| Isotype | IgG1, kappa |
| Applications | ELISA, X-ray crystallography |
| Target | GP, Envelope glycoprotein |
| Purification | Protein A/G purified from cell culture supernatant. |
| Endotoxin level | Please contact with the lab for this information. |
| Accession | Q1PDC7 |
| Stability and Storage | Use a manual defrost freezer and avoid repeated freeze-thaw cycles. Store at 4°C short term (1-2 weeks). Store at -20°C 12 months. Store at -80°C long term. |

Note

For research use only.

Data Image



SEC-HPLC

The purity of this product is
>95% as determined by SEC-
HPLC.