

# Recombinant Human IL12A/IL-12 p35/NKSF1 Protein, C-Strep

## Summary

---

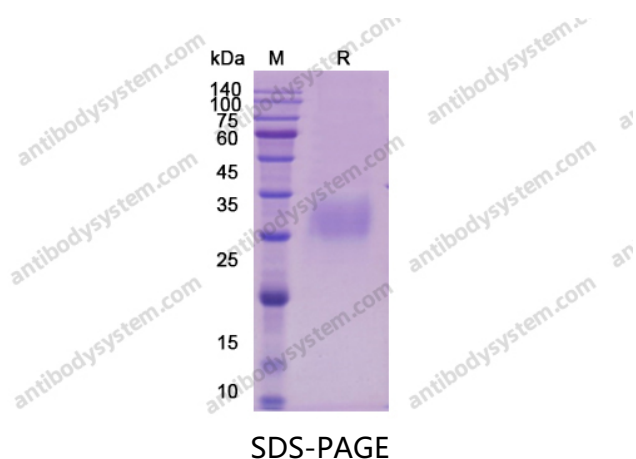
<b>Catalog No.</b>	EHD83901
<b>Alternative Names</b>	IL-12A, NK cell stimulatory factor chain 1, IL12A, CLMF p35, Interleukin-12 subunit alpha, IL-12 subunit p35, NKSF1, Cytotoxic lymphocyte maturation factor 35 kDa subunit
<b>Form</b>	Lyophilized
<b>Storage buffer</b>	Lyophilized from a solution in PBS pH 7.4, 1mM EDTA, 4% Trehalose, 1% Mannitol.
<b>Purity</b>	>90% as determined by SDS-PAGE.
<b>Applications</b>	ELISA, Immunogen, SDS-PAGE, WB, Bioactivity testing in progress
<b>Endotoxin level</b>	Please contact with the lab for this information.
<b>Expression system</b>	Mammalian Cells
<b>Accession</b>	P29459
<b>Protein length</b>	Arg23-Ser219
<b>Nature</b>	Recombinant
<b>Predicted molecular weight</b>	27.83 kDa
<b>Stability and Storage</b>	Use a manual defrost freezer and avoid repeated freeze thaw cycles. Store at 2 to 8°C for frequent use. Store at -20 to -80°C for twelve months from the date of receipt.
<b>Reconstitution</b>	Reconstitute in sterile water for a stock solution. A copy of datasheet will be provided with the products, please refer to it for details.

## Recombinant Proteins &amp; Antibodies

<b>Species</b>	Homo sapiens (Human)
<b>Shipping</b>	In general, proteins are provided as lyophilized powder/frozen liquid. They are shipped out with dry ice/blue ice unless customers require otherwise.
<b>Note</b>	For research use only.

## Data Image

---



SDS PAGE for recombinant Human IL12A / IL-12  
p35 / NKSF1