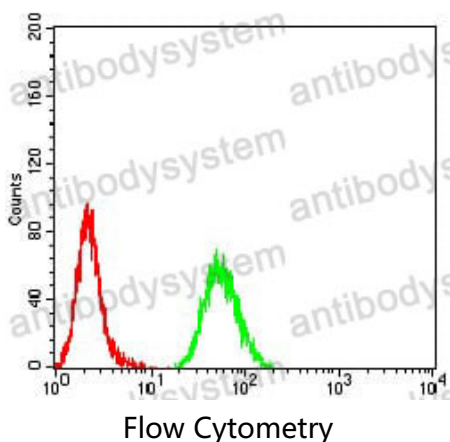


Anti-CPV2 NS1 Antibody (R4D79)

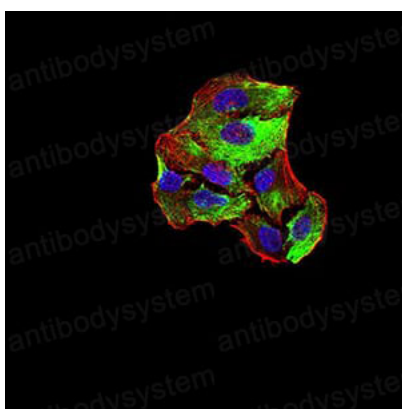
Summary

Catalog No.	RVV44701
Clone ID	R4D79
Host species	Mouse
Tested applications	ELISA: 1:10000, FCM: 1:200-1:400, IF: 1:200-1:1000, IHC: 1:200-1:1000, WB: 1:500-1:2000
Species reactivity	Canine parvovirus type 2 (CPV-2)
Form	Liquid
Storage buffer	0.01M PBS, pH 7.4, 0.05% Sodium Azide.
Concentration	1 mg/ml
Purity	>95% as determined by SDS-PAGE.
Clonality	Monoclonal
Isotype	IgG1
Applications	ELISA, FCM, IF, IHC, WB
Target	NS1
Purification	Protein A/G purified from cell culture supernatant.
Endotoxin level	Please contact with the lab for this information.
Stability and Storage	Use a manual defrost freezer and avoid repeated freeze-thaw cycles. Store at 4°C short term (1-2 weeks). Store at -20°C 12 months. Store at -80°C long term.
Note	For research use only.

Data Image

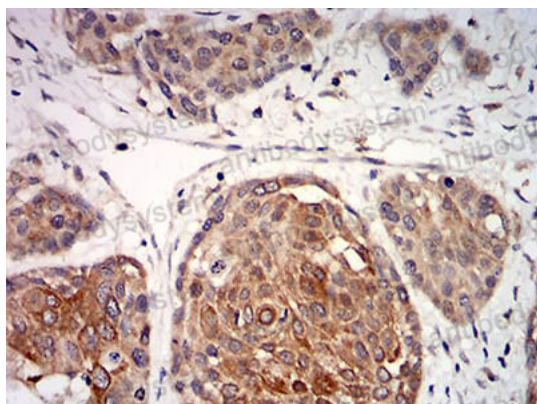


Flow cytometric analysis of Hela cells using CPV-NS1 mouse mAb (green) and negative control (red).



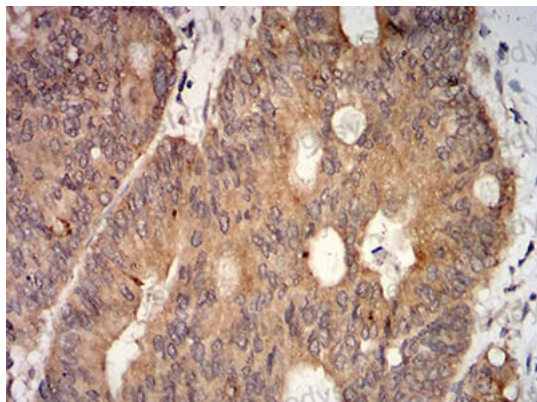
Immunofluorescence

Immunofluorescence analysis of Hela cells using CPV-NS1 mouse mAb (green). Blue: DRAQ5 fluorescent DNA dye. Red: Actin filaments have been labeled with Alexa Fluor- 555 phalloidin.



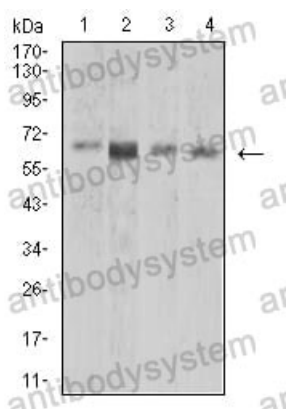
Immunohistochemical

Immunohistochemical analysis of paraffin-embedded human ovarian cancer tissues using CPV-NS1 mouse mAb with DAB staining.



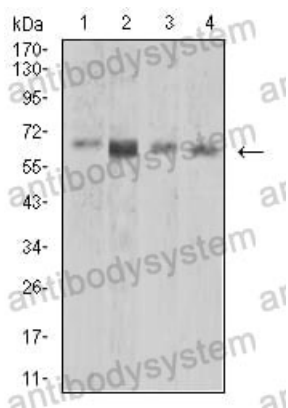
Immunohistochemical

Immunohistochemical analysis of paraffin-embedded human rectum cancer tissues using CPV-NS1 mouse mAb with DAB staining.



Western blot

Western blot analysis using CPV-NS1 mouse mAb against K562 (1), BCBL-1 (2), Raw264.7 (3), and COS7 (4) cell lysate.



Western blot

Western blot analysis using CPV-NS1 mouse mAb against K562 (1), BCBL-1 (2), Raw264.7 (3), and COS7 (4) cell lysate.