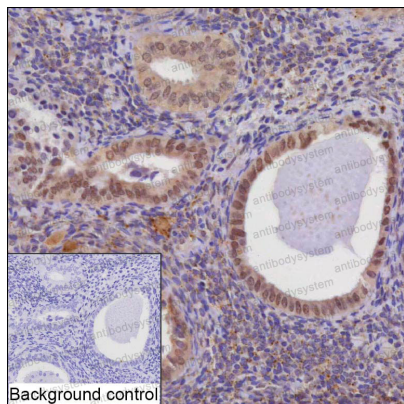


Anti-MLH3 Antibody (R4D16)

Summary

Catalog No.	RHP07501
Clone ID	R4D16
Host species	Mouse
Tested applications	IHC: 1:50-1:200
Species reactivity	Human
Form	Liquid
Storage buffer	0.01M PBS, pH 7.4, 0.05% Sodium Azide.
Concentration	1 mg/ml
Purity	>95% as determined by SDS-PAGE.
Clonality	Monoclonal
Isotype	IgG2b
Applications	IHC
Target	MutL protein homolog 3, MLH3, DNA mismatch repair protein Mlh3
Purification	Protein A/G purified from cell culture supernatant.
Endotoxin level	Please contact with the lab for this information.
Accession	Q9UHC1
Stability and Storage	Use a manual defrost freezer and avoid repeated freeze-thaw cycles. Store at 4°C short term (1-2 weeks). Store at -20°C 12 months. Store at -80°C long term.
Note	For research use only.

Data Image



Immunohistochemical

IHC-P analysis of endometrium tissue by MLH3 antibody (RHP07501). IHC-P was performed using sections of the formalin-fixed paraffin-embedded endometrium tissue; Result: Glandular cells and stromal cells are positively stained at the nuclei.