

Anti-CDC42BPB Antibody (R4D15)

Summary

Catalog No.	RHP07401
Clone ID	R4D15
Host species	Mouse
Tested applications	IHC: 1:50-1:250
Species reactivity	Human
Form	Liquid
Storage buffer	0.01M PBS, pH 7.4, 0.05% Sodium Azide.
Concentration	1 mg/ml
Purity	>95% as determined by SDS-PAGE.
Clonality	Monoclonal
Isotype	IgG1
Applications	IHC
Target	CDC42BP-beta, CDC42-binding protein kinase beta, Myotonic dystrophy protein kinase-like beta, MRCK beta, Myotonic dystrophy kinase-related CDC42-binding kinase beta, Serine/threonine-protein kinase MRCK beta, CDC42BPB, DMPK-like beta, KIAA1124
Purification	Protein A/G purified from cell culture supernatant.
Endotoxin level	Please contact with the lab for this information.
Accession	Q9Y5S2

Stability and Storage

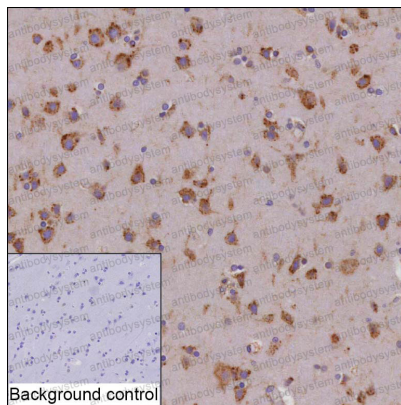
Use a manual defrost freezer and avoid repeated freeze-thaw cycles.

Store at 4°C short term (1-2 weeks). Store at -20°C 12 months. Store at -80°C long term.

Note

For research use only.

Data Image



Immunohistochemical

IHC-P analysis of brain tissue by CDC42BPB antibody (RHP07401). IHC-P was performed using sections of the formalin-fixed paraffin-embedded brain tissue; Result: Cytoplasm of neuronal cells and neuropil are positively stained.