

Anti-OPALIN Antibody (R4D12)

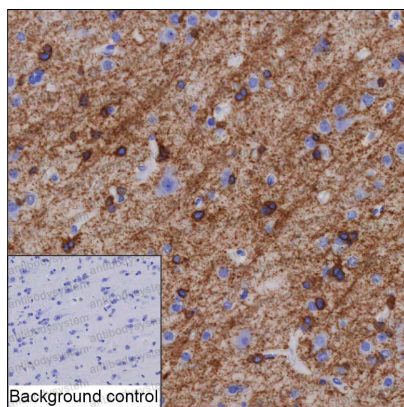
Summary

Catalog No.	RHP07101
Clone ID	R4D12
Host species	Mouse
Tested applications	IHC: 1:100-1:200
Species reactivity	Human
Form	Liquid
Storage buffer	0.01M PBS, pH 7.4, 0.05% Sodium Azide.
Concentration	1 mg/ml
Purity	>95% as determined by SDS-PAGE.
Clonality	Monoclonal
Isotype	IgG1
Applications	IHC
Target	TMEM10, Opalin, HTMP10, OPALIN, Transmembrane protein 10, Oligodendrocytic myelin paranodal and inner loop protein
Purification	Protein A/G purified from cell culture supernatant.
Endotoxin level	Please contact with the lab for this information.
Accession	Q96PE5
Stability and Storage	Use a manual defrost freezer and avoid repeated freeze-thaw cycles. Store at 4°C short term (1-2 weeks). Store at -20°C 12 months. Store at -80°C long term.

Note

For research use only.

Data Image



Immunohistochemical

IHC-P analysis of brain tissue by OPALIN antibody (RHP07101). IHC-P was performed using sections of the formalin-fixed paraffin-embedded brain tissue; Result: Neuropil is positively stained.