

Anti-LRRN1 Antibody (R4C86)

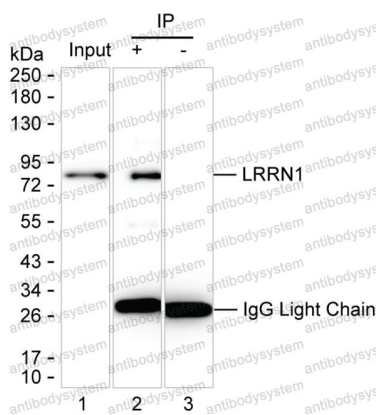
Summary

Catalog No.	RHP05201
Clone ID	R4C86
Host species	Mouse
Tested applications	IP: 1:100-1:200, WB: 1:500-1:1000
Species reactivity	Human
Form	Liquid
Storage buffer	0.01M PBS, pH 7.4, 0.05% Sodium Azide.
Concentration	1 mg/ml
Purity	>95% as determined by SDS-PAGE.
Clonality	Monoclonal
Isotype	IgG1
Applications	IP, WB
Target	Leucine-rich repeat neuronal protein 1, KIAA1497, Neuronal leucine-rich repeat protein 1, LRRN1, NLRR-1
Purification	Protein A/G purified from cell culture supernatant.
Endotoxin level	Please contact with the lab for this information.
Accession	Q6UXK5
Stability and Storage	Use a manual defrost freezer and avoid repeated freeze-thaw cycles. Store at 4°C short term (1-2 weeks). Store at -20°C 12 months. Store at -80°C long term.

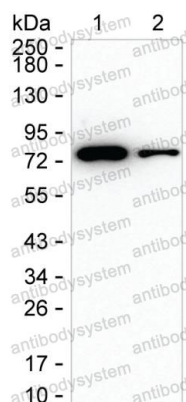
Note

For research use only.

Data Image



Immunoprecipitation



Western blot

Lane 1: SH-SY5Y lysate ; Lane 2: LRRN1 immunoprecipitated from SH-SY5Y lysate by RHP05201; Lane 3: The same as Lane 2 but use IgG isotype control antibody ; Result: RHP05201 can immunoprecipitate LRRN1;

Western blot analysis using LRRN1 mouse mAb against SH-SY5Y lysate and brain lysate