

Anti-KIFBP Antibody (R4C83)

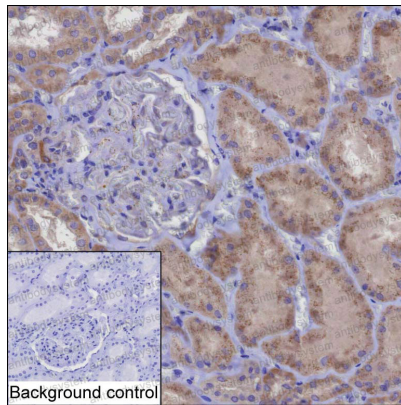
Summary

Catalog No.	RHP05001
Clone ID	R4C83
Host species	Mouse
Tested applications	IHC: 1:100-1:200, IP: 1:100-1:200
Species reactivity	Human, Mouse
Form	Liquid
Storage buffer	0.01M PBS, pH 7.4, 0.05% Sodium Azide.
Concentration	1 mg/ml
Purity	>95% as determined by SDS-PAGE.
Clonality	Monoclonal
Isotype	IgG1
Applications	IHC, IP
Target	KIFBP, KIF1-binding protein, KIF1BP, KIF-binding protein, KBP, Kinesin family binding protein, KIAA1279
Purification	Protein A/G purified from cell culture supernatant.
Endotoxin level	Please contact with the lab for this information.
Accession	Q96EK5
Stability and Storage	Use a manual defrost freezer and avoid repeated freeze-thaw cycles. Store at 4°C short term (1-2 weeks). Store at -20°C 12 months. Store at -80°C long term.

Note

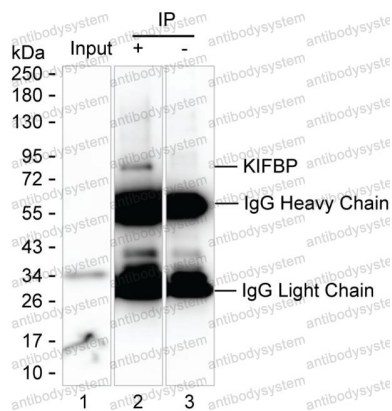
For research use only.

Data Image



Immunohistochemical

IHC-P analysis of kidney tissue by KIFBP antibody (RHP05001). IHC-P was performed using sections of the formalin-fixed paraffin-embedded kidney tissue; Result: Cells in tubules are positively stained at the cytoplasm.



Immunoprecipitation

Lane 1: Mouse kidney tissue lysate ; Lane 2: KIFBP immunoprecipitated from mouse kidney tissue lysate by RHP05001; Lane 3: The same Lane 2 but use IgG isotype control antibody ; Result: RHP05001 can immunoprecipitate KIFBP;