

# Anti-CBLL2 Antibody (R4C76)

## Summary

---

<b>Catalog No.</b>	RHP04702
<b>Clone ID</b>	R4C76
<b>Host species</b>	Mouse
<b>Tested applications</b>	IP: 1:100-1:200, WB: 1:500-1:1000
<b>Species reactivity</b>	Human, Mouse
<b>Form</b>	Liquid
<b>Storage buffer</b>	0.01M PBS, pH 7.4, 0.05% Sodium Azide.
<b>Concentration</b>	1 mg/ml
<b>Purity</b>	>95% as determined by SDS-PAGE.
<b>Clonality</b>	Monoclonal
<b>Isotype</b>	IgG2a
<b>Applications</b>	IP, WB
<b>Target</b>	ZNF645, E3 ubiquitin-protein ligase CBLL2, c-Cbl-like protein 2, RING-type E3 ubiquitin transferase ZNF645, Zinc finger protein 645, CBLL2, Cbl proto-oncogene-like protein 2
<b>Purification</b>	Protein A/G purified from cell culture supernatant.
<b>Endotoxin level</b>	Please contact with the lab for this information.
<b>Accession</b>	Q8N7E2

## Stability and Storage

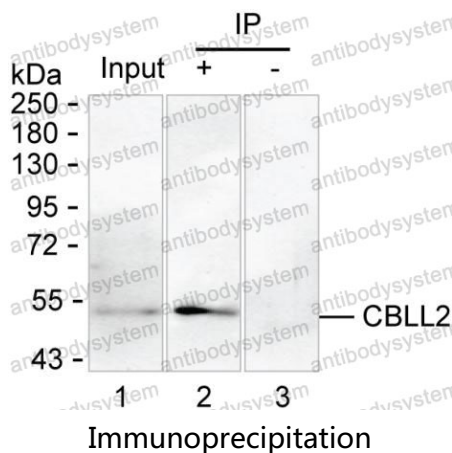
Use a manual defrost freezer and avoid repeated freeze-thaw cycles.

Store at 4°C short term (1-2 weeks). Store at -20°C 12 months. Store at -80°C long term.

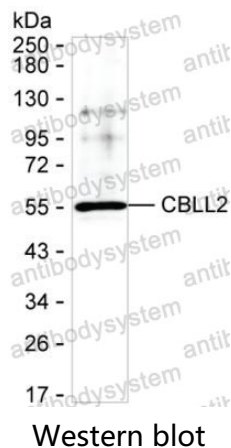
## Note

For research use only.

## Data Image



Lane 1: Mouse testis tissue lysate ; Lane 2: CBLL2 immunoprecipitated from mouse testis tissue lysate by RHP04702; Lane 3: The same as Lane 2 but use IgG isotype control antibody ; Result: RHP04702 can immunoprecipitate CBLL2;



Western blot analysis using CBLL2 mouse mAb against mouse testis tissue lysate