

# Anti-CMTM6 Antibody (R4C56)

## Summary

---

<b>Catalog No.</b>	RHP03101
<b>Clone ID</b>	R4C56
<b>Host species</b>	Mouse
<b>Tested applications</b>	IHC: 1:500, IP: 1:100-1:200, WB: 1:500-1:1000
<b>Species reactivity</b>	Human
<b>Form</b>	Liquid
<b>Storage buffer</b>	0.01M PBS, pH 7.4, 0.05% Sodium Azide.
<b>Concentration</b>	1 mg/ml
<b>Purity</b>	>95% as determined by SDS-PAGE.
<b>Clonality</b>	Monoclonal
<b>Isotype</b>	IgG1
<b>Applications</b>	IHC, IP, WB
<b>Target</b>	CKLF-like MARVEL transmembrane domain-containing protein 6, Chemokine-like factor superfamily member 6, CKLFSF6, CMTM6
<b>Purification</b>	Protein A/G purified from cell culture supernatant.
<b>Endotoxin level</b>	Please contact with the lab for this information.
<b>Accession</b>	Q9NX76
<b>Stability and Storage</b>	Use a manual defrost freezer and avoid repeated freeze-thaw cycles. Store at 4°C short term (1-2 weeks). Store at -20°C 12 months. Store at -80°C long term.

**Note**

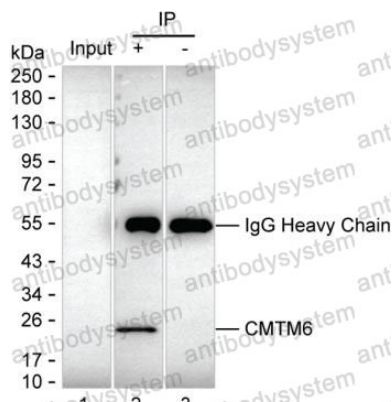
For research use only.

## Data Image



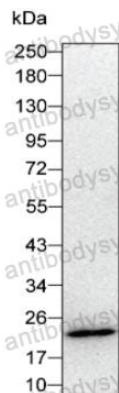
Immunohistochemical

IHC-P analysis of endometrium tissue by CMTM6 antibody (RHP03101). Immunohistochemistry was performed using sections of formalin-fixed paraffin-embedded endometrium tissue; Result: Glandular cells are positively stained at the cell membrane.



Immunoprecipitation

Lane 1: Jurkat lysate; Lane 2: CMTM6 immunoprecipitated from Jurkat lysate by RHP03101; Lane 3: The same as Lane 2 but use IgG isotype control antibody; Result: RHP03101 can immunoprecipitate CMTM6;



Western blot

Western blot analysis using CMTM6 mouse mAb  
against Jurkat lysate