

Anti-PELI3 Antibody (R4C50)

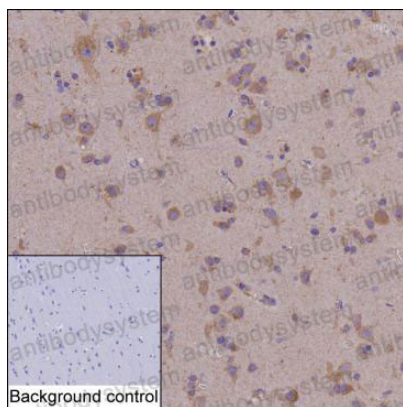
Summary

Catalog No.	RHP02601
Clone ID	R4C50
Host species	Mouse
Tested applications	IHC: 1:50-1:250
Species reactivity	Human
Form	Liquid
Storage buffer	0.01M PBS, pH 7.4, 0.05% Sodium Azide.
Concentration	1 mg/ml
Purity	>95% as determined by SDS-PAGE.
Clonality	Monoclonal
Isotype	IgG2b
Applications	IHC
Target	RING-type E3 ubiquitin transferase pellino homolog 3, Pellino-3, E3 ubiquitin-protein ligase pellino homolog 3, PELI3
Purification	Protein A/G purified from cell culture supernatant.
Endotoxin level	Please contact with the lab for this information.
Accession	Q8N2H9
Stability and Storage	Use a manual defrost freezer and avoid repeated freeze-thaw cycles. Store at 4°C short term (1-2 weeks). Store at -20°C 12 months. Store at -80°C long term.

Note

For research use only.

Data Image



Immunohistochemical

IHC-P analysis of brain tissue by PELI3 antibody (RHP02601). IHC-P was performed using sections of the formalin-fixed paraffin-embedded brain tissue; Result: Neuronal cells are positively stained at the cytoplasm and membrane.