

# Anti-PSMD1 Antibody (R4C47)

## Summary

---

<b>Catalog No.</b>	RHP02301
<b>Clone ID</b>	R4C47
<b>Host species</b>	Mouse
<b>Tested applications</b>	IHC: 1:500, WB: 1:500-1:1000
<b>Species reactivity</b>	Human
<b>Form</b>	Liquid
<b>Storage buffer</b>	0.01M PBS, pH 7.4, 0.05% Sodium Azide.
<b>Concentration</b>	1 mg/ml
<b>Purity</b>	>95% as determined by SDS-PAGE.
<b>Clonality</b>	Monoclonal
<b>Isotype</b>	IgG1
<b>Applications</b>	IHC, WB
<b>Target</b>	26S proteasome non-ATPase regulatory subunit 1, 26S proteasome subunit p112, PSMD1, 26S proteasome regulatory subunit RPN2, 26S proteasome regulatory subunit S1
<b>Purification</b>	Protein A/G purified from cell culture supernatant.
<b>Endotoxin level</b>	Please contact with the lab for this information.
<b>Accession</b>	Q99460

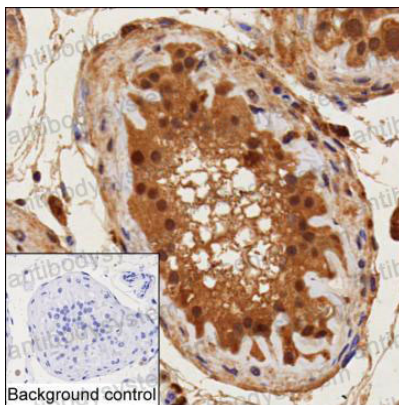
**Stability and Storage**

Use a manual defrost freezer and avoid repeated freeze-thaw cycles.

Store at 4°C short term (1-2 weeks). Store at -20°C 12 months. Store at -80°C long term.

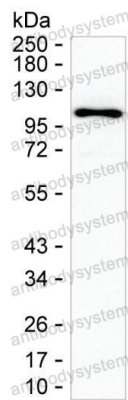
**Note**

For research use only.

**Data Image**

Immunohistochemical

IHC-P analysis of testis tissue by PSMD1 antibody (RHP02301). IHC-P was performed using sections of the formalin-fixed paraffin-embedded testis tissue; Result: Cells in seminiferous ducts are positively stained at the cytoplasm and nuclei.



Western blot

Western blot analysis using PSMD1 mouse mAb against Hep G2 lysate