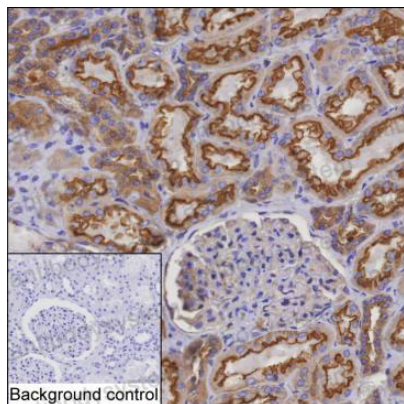


Anti-MYO6 Antibody (R4C39)

Summary

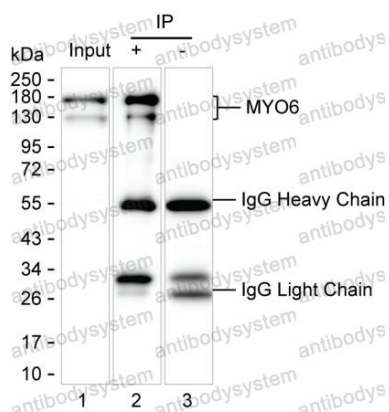
Catalog No.	RHP01601
Clone ID	R4C39
Host species	Mouse
Tested applications	IHC: 1:100-1:200, IP: 1:100-1:200, WB: 1:500-1:1000
Species reactivity	Human
Form	Liquid
Storage buffer	0.01M PBS, pH 7.4, 0.05% Sodium Azide.
Concentration	1 mg/ml
Purity	>95% as determined by SDS-PAGE.
Clonality	Monoclonal
Isotype	IgG1
Applications	IHC, IP, WB
Target	KIAA0389, Unconventional myosin-6, MYO6, Unconventional myosin-VI
Purification	Protein A/G purified from cell culture supernatant.
Endotoxin level	Please contact with the lab for this information.
Accession	Q9UM54
Stability and Storage	Use a manual defrost freezer and avoid repeated freeze-thaw cycles. Store at 4°C short term (1-2 weeks). Store at -20°C 12 months. Store at -80°C long term.
Note	For research use only.

Data Image



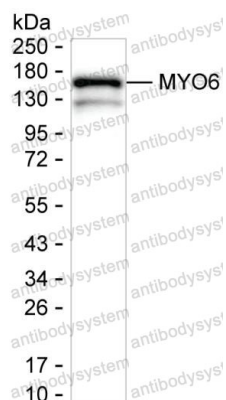
Immunohistochemical

IHC-P analysis of kidney tissue by MYO6 antibody (RHP01601). IHC-P was performed using sections of the formalin-fixed paraffin-embedded kidney tissue; Result: Cells in tubules are positively stained at the cytoplasm and membrane.



Immunoprecipitation

Lane 1: HT-29 lysate ; Lane 2: MYO6 immunoprecipitated from HT-29 lysate by RHP01601; Lane 3: The same as Lane 2 but use IgG isotype control antibody ; Result: RHP01601 can immunoprecipitate MYO6;



Western blot

Western blot analysis using MYO6 mouse mAb against HT-29 lysate