

Anti-SPDL1 Antibody (R4C36)

Summary

Catalog No.	RHP01301
Clone ID	R4C36
Host species	Mouse
Tested applications	IHC: 1:100-1:200
Species reactivity	Human
Form	Liquid
Storage buffer	0.01M PBS, pH 7.4, 0.05% Sodium Azide.
Concentration	1 mg/ml
Purity	>95% as determined by SDS-PAGE.
Clonality	Monoclonal
Isotype	IgG1
Applications	IHC
Target	Spindle apparatus coiled-coil domain-containing protein 1, Coiled-coil domain-containing protein 99, Protein Spindly, Arsenite-related gene 1 protein, SPDL1, Rhabdomyosarcoma antigen MU-RMS-40.4A, CCDC99, hSpindly
Purification	Protein A/G purified from cell culture supernatant.
Endotoxin level	Please contact with the lab for this information.
Accession	Q96EA4

Stability and Storage

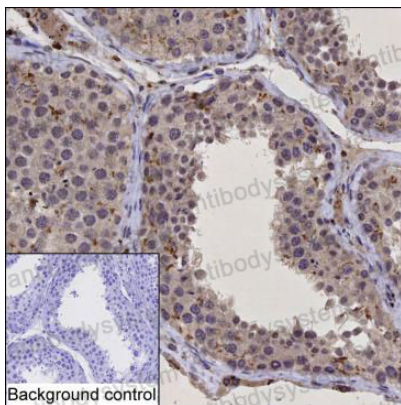
Use a manual defrost freezer and avoid repeated freeze-thaw cycles.

Store at 4°C short term (1-2 weeks). Store at -20°C 12 months. Store at -80°C long term.

Note

For research use only.

Data Image



Immunohistochemical

IHC-P analysis of testis tissue by SPDL1 antibody (RHP01301). IHC-P was performed using sections of the formalin-fixed paraffin-embedded testis tissue; Result: Cells in seminiferous ducts are positively stained at the cytoplasm and nuclei.