

Anti-MRPL42 Antibody (R4C26)

Summary

Catalog No.	RHP00502
Clone ID	R4C26
Host species	Mouse
Tested applications	FCM: 1:200-1:400, IF: 1:300, IHC: 1:200-1:1000
Species reactivity	Human
Form	Liquid
Storage buffer	0.01M PBS, pH 7.4, 0.05% Sodium Azide.
Concentration	1 mg/ml
Purity	>95% as determined by SDS-PAGE.
Clonality	Monoclonal
Isotype	IgG1
Applications	FCM, IF, IHC
Target	MRPL31, RPML31, L42mt, Mitochondrial large ribosomal subunit protein mL42, MRPL42, 39S ribosomal protein L31, mitochondrial, MRP-L42, 39S ribosomal protein L42, mitochondrial, MRPS32, L31mt, MRP-L31
Purification	Protein A/G purified from cell culture supernatant.
Endotoxin level	Please contact with the lab for this information.
Accession	Q9Y6G3

Stability and Storage

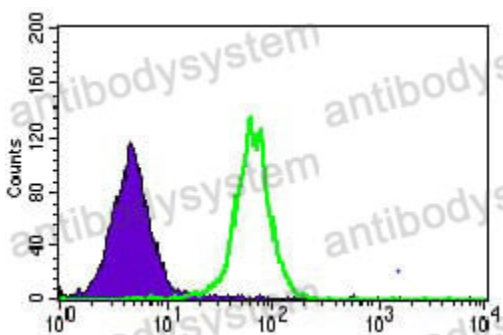
Use a manual defrost freezer and avoid repeated freeze-thaw cycles.

Store at 4°C short term (1-2 weeks). Store at -20°C 12 months. Store at -80°C long term.

Note

For research use only.

Data Image



Flow Cytometry

Flow cytometric analysis of HepG2 cells using MRPL42 mouse mAb (green) and negative control (purple).