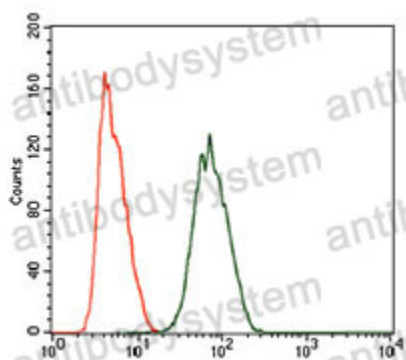


Anti-PIWIL4 Antibody (R4C24)

Summary

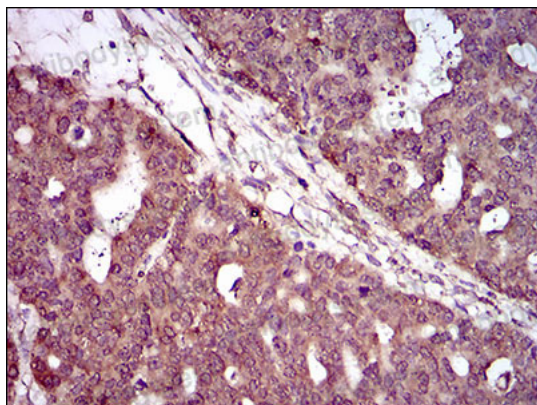
Catalog No.	RHP00301
Clone ID	R4C24
Host species	Mouse
Tested applications	ELISA: 1:10000, FCM: 1:200-1:400, IHC: 1:200-1:1000, WB: 1:500-1:2000
Species reactivity	Human
Form	Liquid
Storage buffer	0.01M PBS, pH 7.4, 0.05% Sodium Azide.
Concentration	1 mg/ml
Purity	>95% as determined by SDS-PAGE.
Clonality	Monoclonal
Isotype	IgG1
Applications	ELISA, FCM, IHC, WB
Target	PIWI, PIWIL4, HIWI2, Piwi-like protein 4
Purification	Protein A/G purified from cell culture supernatant.
Endotoxin level	Please contact with the lab for this information.
Accession	Q7Z3Z4
Stability and Storage	Use a manual defrost freezer and avoid repeated freeze-thaw cycles. Store at 4°C short term (1-2 weeks). Store at -20°C 12 months. Store at -80°C long term.
Note	For research use only.

Data Image



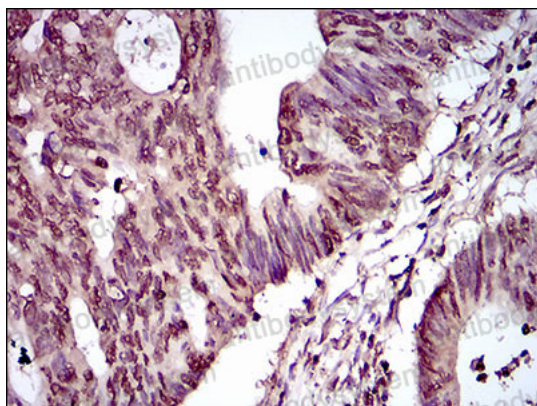
Flow Cytometry

Flow cytometric analysis of HeLa cells using PIWIL4 mouse mAb (green) and negative control (purple)



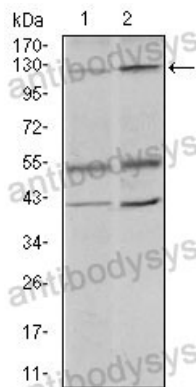
Immunohistochemical

Immunohistochemical analysis of paraffin-embedded ovarian cancer tissues using PIWIL4 mouse mAb with DAB staining.



Immunohistochemical

Immunohistochemical analysis of paraffin-embedded rectum cancer tissues using PIWIL4 mouse mAb with DAB staining.



Western blot

Western blot analysis using PIWIL4 mouse mAb against PC-3 (1) and PANC-1 (2) cell lysate.