

# Anti-SLC27A5 Antibody (R4C20)

## Summary

---

<b>Catalog No.</b>	RHN99801
<b>Clone ID</b>	R4C20
<b>Host species</b>	Mouse
<b>Tested applications</b>	ELISA: 1:10000, IHC: 1:200-1:1000, WB: 1:500-1:2000
<b>Species reactivity</b>	Human, Mouse
<b>Form</b>	Liquid
<b>Storage buffer</b>	0.01M PBS, pH 7.4, 0.05% Sodium Azide.
<b>Concentration</b>	1 mg/ml
<b>Purity</b>	>95% as determined by SDS-PAGE.
<b>Clonality</b>	Monoclonal
<b>Isotype</b>	IgG1
<b>Applications</b>	ELISA, IHC, WB
<b>Target</b>	Bile acyl-CoA synthetase, Fatty acid transport protein 5, ACSB, FACVL3, VLCS-H2, BACS, BA-CoA ligase, Fatty-acid-coenzyme A ligase, very long-chain 3, Very long-chain acyl-CoA synthetase-related protein, FATP-5, Very long-chain acyl-CoA synthetase homolog 2, ACSVL6, VLACS-related, Bile acid-CoA ligase, FATP5, BAL, Solute carrier family 27 member 5, Cholate--CoA ligase, SLC27A5, VLCSH2, VLACSR
<b>Purification</b>	Protein A/G purified from cell culture supernatant.
<b>Endotoxin level</b>	Please contact with the lab for this information.
<b>Accession</b>	Q9Y2P5

**Stability and Storage**

Use a manual defrost freezer and avoid repeated freeze-thaw cycles.

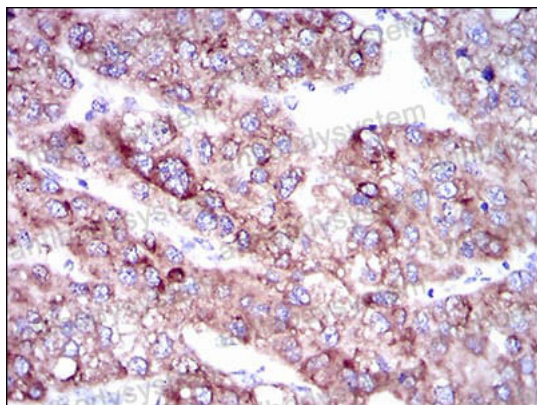
Store at 4°C short term (1-2 weeks). Store at -20°C 12 months. Store at -80°C long term.

**Note**

For research use only.

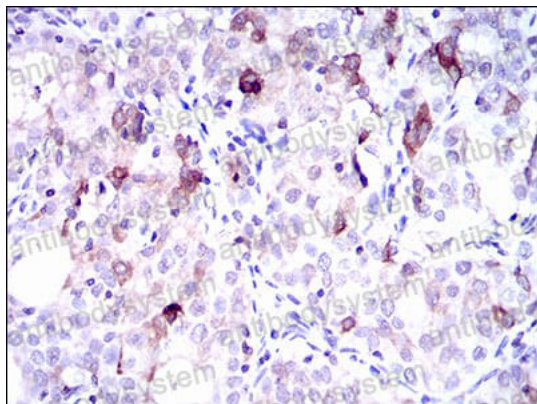
**Data Image**

---



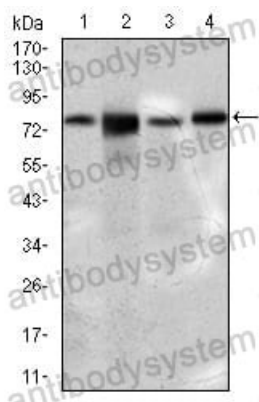
Immunohistochemical

Immunohistochemical analysis of paraffin-embedded human liver cancer tissues using SLC27A5 mouse mAb with DAB staining.



Immunohistochemical

Immunohistochemical analysis of paraffin-embedded human cervical cancer tissues using SLC27A5 mouse mAb with DAB staining.



Western blot

Western blot analysis using SLC27A5 mouse mAb against 3T3L1 (1), HepG2 (2), NIH3T3 (3), and PC-3 (4) cell lysate.