

Anti-EIF2B3 Antibody (R4C18)

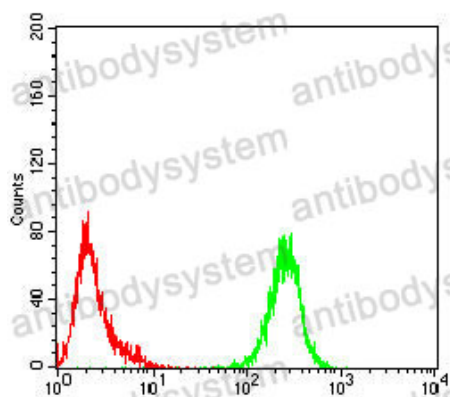
Summary

Catalog No.	RHN99701
Clone ID	R4C18
Host species	Mouse
Tested applications	FCM: 1:200-1:400, IF: 1:50-1:200, IHC: 1:200-1:1000, WB: 1:500-1:2000
Species reactivity	Human
Form	Liquid
Storage buffer	0.01M PBS, pH 7.4, 0.05% Sodium Azide.
Concentration	1 mg/ml
Purity	>95% as determined by SDS-PAGE.
Clonality	Monoclonal
Isotype	IgG1
Applications	FCM, IF, IHC, WB
Target	Translation initiation factor eIF-2B subunit gamma, EIF2B3, eIF-2B GDP-GTP exchange factor subunit gamma
Purification	Protein A/G purified from cell culture supernatant.
Endotoxin level	Please contact with the lab for this information.
Accession	Q9NR50
Stability and Storage	Use a manual defrost freezer and avoid repeated freeze-thaw cycles. Store at 4°C short term (1-2 weeks). Store at -20°C 12 months. Store at -80°C long term.

Note

For research use only.

Data Image



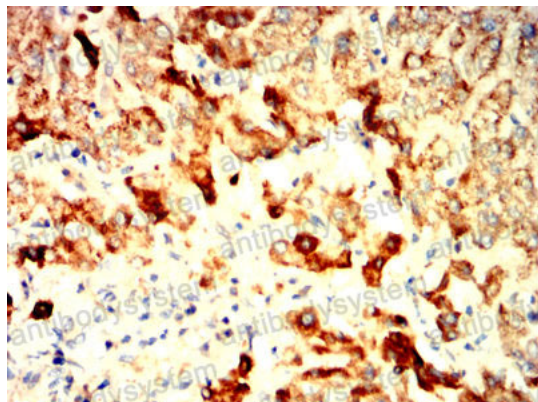
Flow Cytometry

Flow cytometric analysis of HL-60 cells using EI2BG mouse mAb (green) and negative control (red).



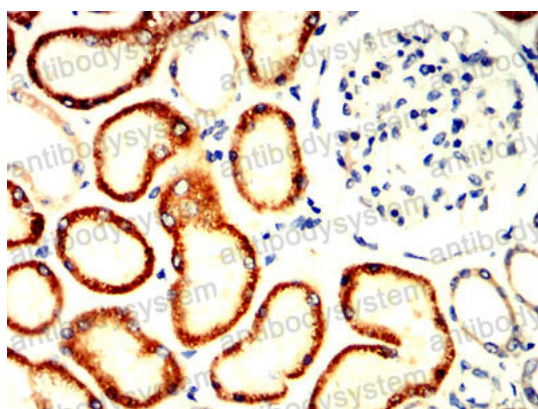
Immunofluorescence

Immunofluorescence analysis of Hela cells using EI2BG mouse mAb (green). Blue: DRAQ5 fluorescent DNA dye. Red: Actin filaments have been labeled with Alexa Fluor- 555 phalloidin.



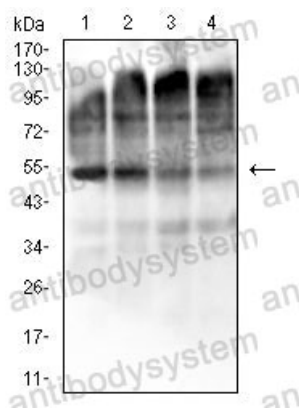
Immunohistochemical

Immunohistochemical analysis of paraffin-embedded human liver tissues using EI2BG mouse mAb with DAB staining.



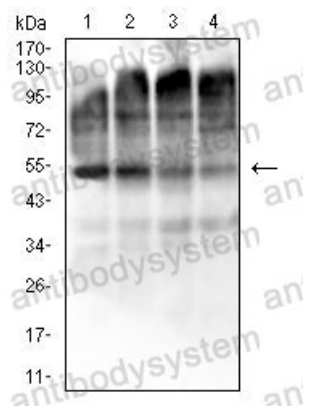
Immunohistochemical

Immunohistochemical analysis of paraffin-embedded human kidney tissues using EI2BG mouse mAb with DAB staining.



Western blot

Western blot analysis using EI2BG mouse mAb against K562 (1), Hela (2), MCF-7 (3) and HL-60 (4) cell lysate.



Western blot

Western blot analysis using EI2BG mouse mAb against K562 (1), HeLa (2), MCF-7 (3) and HL-60 (4) cell lysate.