

# Anti-SLC7A3 Antibody (R4C11)

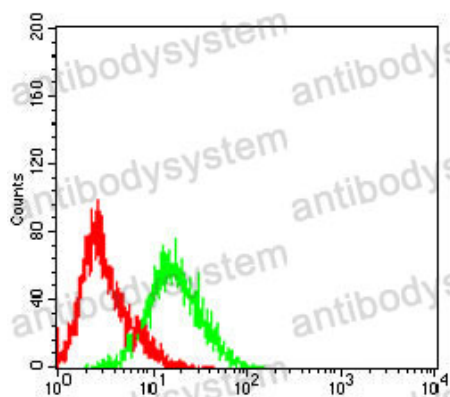
## Summary

---

<b>Catalog No.</b>	RHN99201
<b>Clone ID</b>	R4C11
<b>Host species</b>	Mouse
<b>Tested applications</b>	ELISA: 1:10000, FCM: 1:200-1:400, WB: 1:500-1:2000
<b>Species reactivity</b>	Human
<b>Form</b>	Liquid
<b>Storage buffer</b>	0.01M PBS, pH 7.4, 0.05% Sodium Azide.
<b>Concentration</b>	1 mg/ml
<b>Purity</b>	>95% as determined by SDS-PAGE.
<b>Clonality</b>	Monoclonal
<b>Isotype</b>	IgG1
<b>Applications</b>	ELISA, FCM, WB
<b>Target</b>	CAT3, ATRC3, SLC7A3, Cationic amino acid transporter 3, CAT-3, Solute carrier family 7 member 3, Cationic amino acid transporter y+
<b>Purification</b>	Protein A/G purified from cell culture supernatant.
<b>Endotoxin level</b>	Please contact with the lab for this information.
<b>Accession</b>	Q8WY07
<b>Stability and Storage</b>	Use a manual defrost freezer and avoid repeated freeze-thaw cycles. Store at 4°C short term (1-2 weeks). Store at -20°C 12 months. Store at -80°C long term.

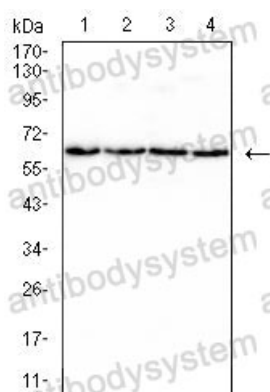
**Note**

For research use only.

**Data Image**

Flow Cytometry

Flow cytometric analysis of HepG2 cells using SLC7A3 mouse mAb (green) and negative control (red).



Western blot

Western blot analysis using SLC7A3 mouse mAb against HepG2 (1), A431 (2), SMMC-7721 (3) and A549 (4) cell lysate.