

Anti-SLC7A3 Antibody (R4C10)

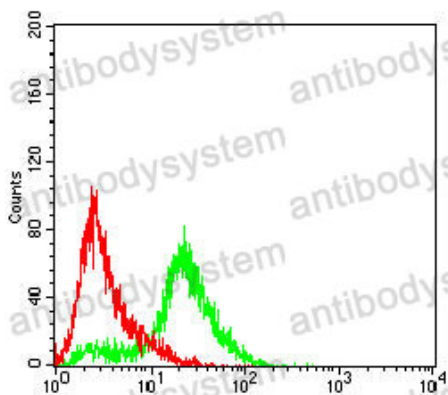
Summary

Catalog No.	RHN99202
Clone ID	R4C10
Host species	Mouse
Tested applications	ELISA: 1:10000, FCM: 1:200-1:400, IHC: 1:200-1:1000, WB: 1:500-1:2000
Species reactivity	Human, Mouse, Rat
Form	Liquid
Storage buffer	0.01M PBS, pH 7.4, 0.05% Sodium Azide.
Concentration	1 mg/ml
Purity	>95% as determined by SDS-PAGE.
Clonality	Monoclonal
Isotype	IgG1
Applications	ELISA, FCM, IHC, WB
Target	CAT3, ATRC3, SLC7A3, Cationic amino acid transporter 3, CAT-3, Solute carrier family 7 member 3, Cationic amino acid transporter y+
Purification	Protein A/G purified from cell culture supernatant.
Endotoxin level	Please contact with the lab for this information.
Accession	Q8WY07
Stability and Storage	Use a manual defrost freezer and avoid repeated freeze-thaw cycles. Store at 4°C short term (1-2 weeks). Store at -20°C 12 months. Store at -80°C long term.

Note

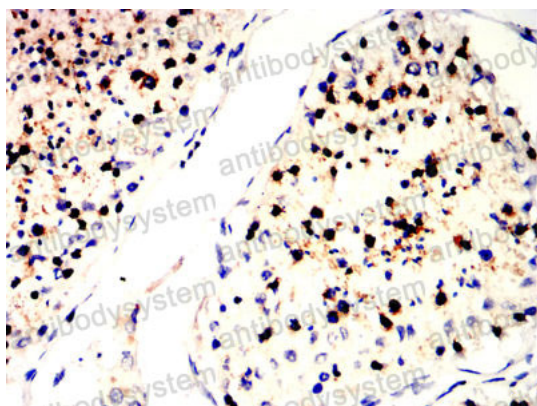
For research use only.

Data Image



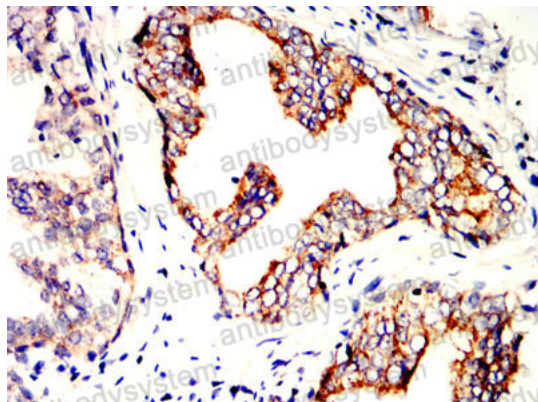
Flow Cytometry

Flow cytometric analysis of Hela cells using SLC7A3 mouse mAb (green) and negative control (red).



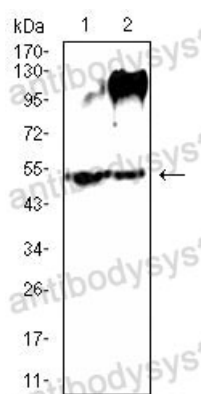
Immunohistochemical

Immunohistochemical analysis of paraffin-embedded human testis tissues using SLC7A3 mouse mAb with DAB staining.



Immunohistochemical

Immunohistochemical analysis of paraffin-embedded human prostate cancer tissues using SLC7A3 mouse mAb with DAB staining.



Western blot

Western blot analysis using SLC7A3 mouse mAb against Mouse Lung (1) and Rat Lung (2) tissue lysate.