

Anti-ATG4B Antibody (R4B81)

Summary

Catalog No.	RHN97601
Clone ID	R4B81
Host species	Mouse
Tested applications	ELISA: 1:10000, FCM: 1:200-1:400, WB: 1:500-1:2000
Species reactivity	Human, Mouse
Form	Liquid
Storage buffer	0.01M PBS, pH 7.4, 0.05% Sodium Azide.
Concentration	1 mg/ml
Purity	>95% as determined by SDS-PAGE.
Clonality	Monoclonal
Isotype	IgG1
Applications	ELISA, FCM, WB
Target	AUTL1, Autophagy-related cysteine endopeptidase 1, KIAA0943, hAPG4B, ATG4B, Autophagin-1, APG4B, Cysteine protease ATG4B, Autophagy-related protein 4 homolog B, AUT-like 1 cysteine endopeptidase
Purification	Protein A/G purified from cell culture supernatant.
Endotoxin level	Please contact with the lab for this information.
Accession	Q9Y4P1

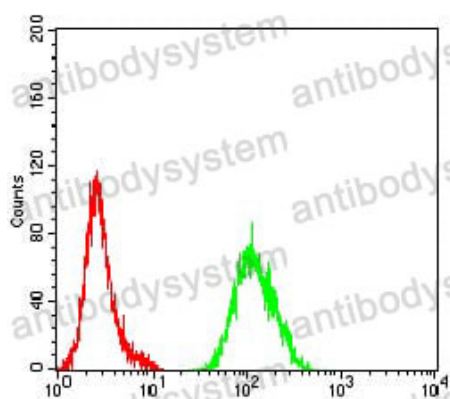
Stability and Storage

Use a manual defrost freezer and avoid repeated freeze-thaw cycles.

Store at 4°C short term (1-2 weeks). Store at -20°C 12 months. Store at -80°C long term.

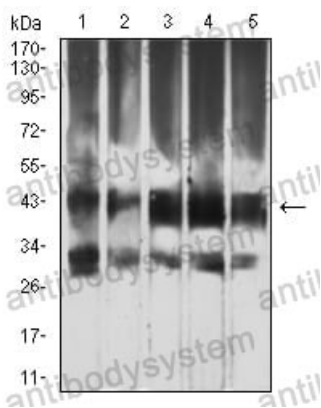
Note

For research use only.

Data Image

Flow Cytometry

Flow cytometric analysis of Hela cells using ATG4B mouse mAb (green) and negative control (red).



Western blot

Western blot analysis using ATG4B mouse mAb against Hela (1), RAW264.7 (2), Ramos (3), Jurkat (4), and HepG2 (5) cell lysate.