

Anti-WDFY3 Antibody (R4B76)

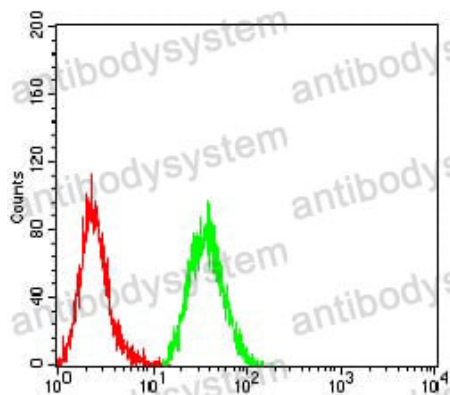
Summary

Catalog No.	RHN97301
Clone ID	R4B76
Host species	Mouse
Tested applications	ELISA: 1:10000, FCM: 1:200-1:400, IHC: 1:200-1:1000
Species reactivity	Human
Form	Liquid
Storage buffer	0.01M PBS, pH 7.4, 0.05% Sodium Azide.
Concentration	1 mg/ml
Purity	>95% as determined by SDS-PAGE.
Clonality	Monoclonal
Isotype	IgG1
Applications	ELISA, FCM, IHC
Target	Autophagy-linked FYVE protein, WDFY3, WD repeat and FYVE domain-containing protein 3, KIAA0993, Alfz
Purification	Protein A/G purified from cell culture supernatant.
Endotoxin level	Please contact with the lab for this information.
Accession	Q8IZQ1
Stability and Storage	Use a manual defrost freezer and avoid repeated freeze-thaw cycles. Store at 4°C short term (1-2 weeks). Store at -20°C 12 months. Store at -80°C long term.

Note

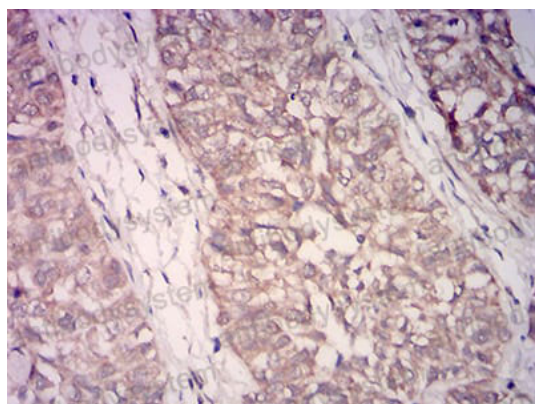
For research use only.

Data Image



Flow Cytometry

Flow cytometric analysis of Hela cells using WDFY3 mouse mAb (green) and negative control (red).



Immunohistochemical

Immunohistochemical analysis of paraffin-embedded human bladder cancer tissues using WDFY3 mouse mAb with DAB staining.