

Anti-KMT2C Antibody (R4B75)

Summary

Catalog No.	RHN97202
Clone ID	R4B75
Host species	Mouse
Tested applications	ELISA: 1:10000, FCM: 1:200-1:400, IF: 1:200-1:1000, IHC: 1:200-1:1000
Species reactivity	Human
Form	Liquid
Storage buffer	0.01M PBS, pH 7.4, 0.05% Sodium Azide.
Concentration	1 mg/ml
Purity	>95% as determined by SDS-PAGE.
Clonality	Monoclonal
Isotype	IgG1
Applications	ELISA, FCM, IF, IHC
Target	MLL3, Homologous to ALR protein, Myeloid/lymphoid or mixed-lineage leukemia protein 3, HALR, Lysine N-methyltransferase 2C, KIAA1506, KMT2C, Histone-lysine N-methyltransferase 2C
Purification	Protein A/G purified from cell culture supernatant.
Endotoxin level	Please contact with the lab for this information.
Accession	Q8NEZ4

Stability and Storage

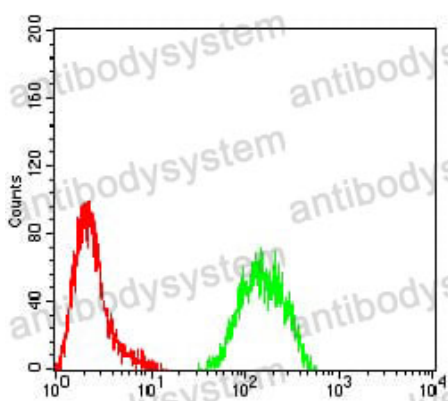
Use a manual defrost freezer and avoid repeated freeze-thaw cycles.

Store at 4°C short term (1-2 weeks). Store at -20°C 12 months. Store at -80°C long term.

Note

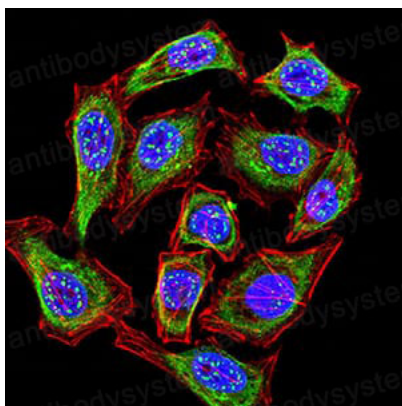
For research use only.

Data Image



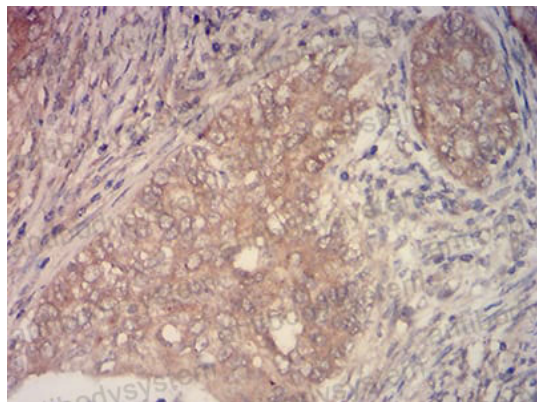
Flow Cytometry

Flow cytometric analysis of Hela cells using KMT2C mouse mAb (green) and negative control (red).



Immunofluorescence

Immunofluorescence analysis of Hela cells using KMT2C mouse mAb (green). Blue: DRAQ5 fluorescent DNA dye. Red: Actin filaments have been labeled with Alexa Fluor- 555 phalloidin.



Immunohistochemical

Immunohistochemical analysis of paraffin-embedded human cervical cancer tissues using KMT2C mouse mAb with DAB staining.