

Anti-CHRNA10 Antibody (R4B69)

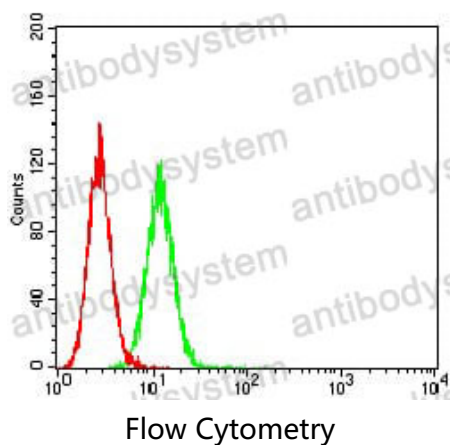
Summary

| | |
|------------------------------|---|
| Catalog No. | RHN96902 |
| Clone ID | R4B69 |
| Host species | Mouse |
| Tested applications | ELISA: 1:10000, FCM: 1:200-1:400 |
| Species reactivity | Human |
| Form | Liquid |
| Storage buffer | 0.01M PBS, pH 7.4, 0.05% Sodium Azide. |
| Concentration | 1 mg/ml |
| Purity | >95% as determined by SDS-PAGE. |
| Clonality | Monoclonal |
| Isotype | IgG2a |
| Applications | ELISA, FCM |
| Target | Nicotinic acetylcholine receptor subunit alpha-10, Neuronal acetylcholine receptor subunit alpha-10, NACHR alpha-10, CHRNA10, NACHRA10 |
| Purification | Protein A/G purified from cell culture supernatant. |
| Endotoxin level | Please contact with the lab for this information. |
| Accession | Q9GZZ6 |
| Stability and Storage | Use a manual defrost freezer and avoid repeated freeze-thaw cycles. Store at 4°C short term (1-2 weeks). Store at -20°C 12 months. Store at -80°C long term. |

Note

For research use only.

Data Image



Flow cytometric analysis of Hela cells using CHRNA10 mouse mAb (green) and negative control (red).