

Anti-BTRC Antibody (R4B67)

Summary

Catalog No.	RHN96802
Clone ID	R4B67
Host species	Mouse
Tested applications	ELISA: 1:10000, IHC: 1:200-1:1000, WB: 1:500-1:2000
Species reactivity	Human
Form	Liquid
Storage buffer	0.01M PBS, pH 7.4, 0.05% Sodium Azide.
Concentration	1 mg/ml
Purity	>95% as determined by SDS-PAGE.
Clonality	Monoclonal
Isotype	IgG1
Applications	ELISA, IHC, WB
Target	BTRC, Epididymis tissue protein Li 2a, BTRCP, FBXW1A, F-box/WD repeat-containing protein 1A, pIkappaBalpha-E3 receptor subunit, FBW1A, E3RSIkappaB, F-box and WD repeats protein beta-TrCP
Purification	Protein A/G purified from cell culture supernatant.
Endotoxin level	Please contact with the lab for this information.
Accession	Q9Y297

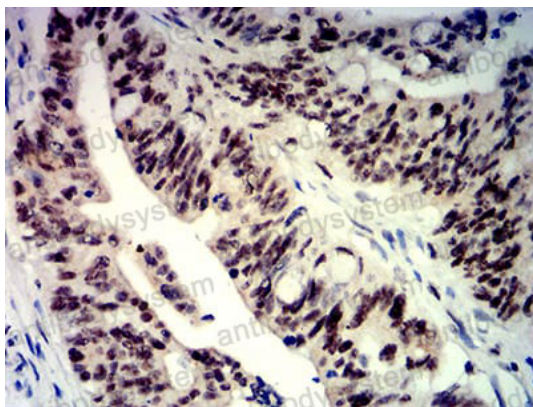
Stability and Storage

Use a manual defrost freezer and avoid repeated freeze-thaw cycles.

Store at 4°C short term (1-2 weeks). Store at -20°C 12 months. Store at -80°C long term.

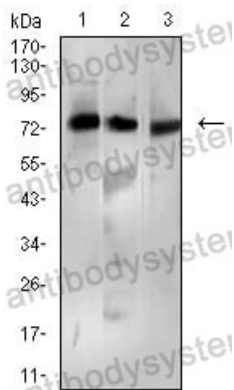
Note

For research use only.

Data Image

Immunohistochemical

Immunohistochemical analysis of paraffin-embedded human rectum cancer tissues using BTRC mouse mAb with DAB staining.



Western blot

Western blot analysis using BTRC mouse mAb against Ramos (1), MCF-7 (2), and K562 (3) cell lysate.