

Anti-BTRC Antibody (R4B66)

Summary

Catalog No.	RHN96801
Clone ID	R4B66
Host species	Mouse
Tested applications	ELISA: 1:10000, FCM: 1:200-1:400, IHC: 1:200-1:1000, WB: 1:500-1:2000
Species reactivity	Human
Form	Liquid
Storage buffer	0.01M PBS, pH 7.4, 0.05% Sodium Azide.
Concentration	1 mg/ml
Purity	>95% as determined by SDS-PAGE.
Clonality	Monoclonal
Isotype	IgG1
Applications	ELISA, FCM, IHC, WB
Target	BTRC, Epididymis tissue protein Li 2a, BTRCP, FBXW1A, F-box/WD repeat-containing protein 1A, pIkappaBalpha-E3 receptor subunit, FBW1A, E3RSIkappaB, F-box and WD repeats protein beta-TrCP
Purification	Protein A/G purified from cell culture supernatant.
Endotoxin level	Please contact with the lab for this information.
Accession	Q9Y297

Stability and Storage

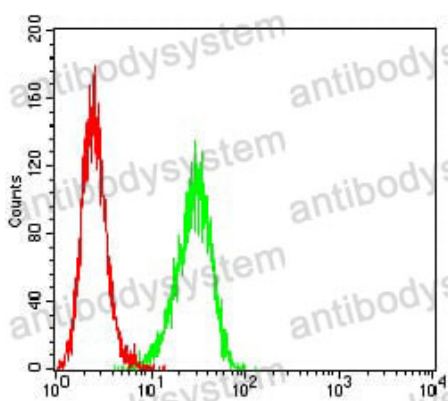
Use a manual defrost freezer and avoid repeated freeze-thaw cycles.

Store at 4°C short term (1-2 weeks). Store at -20°C 12 months. Store at -80°C long term.

Note

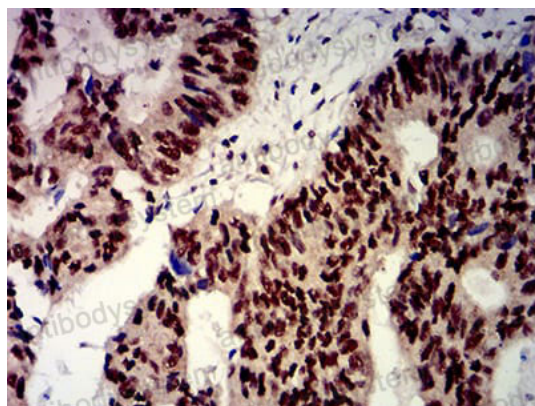
For research use only.

Data Image



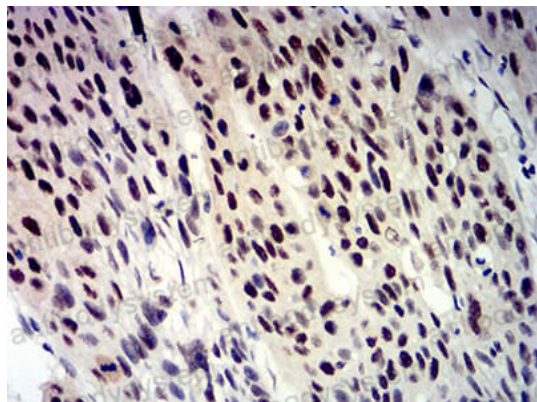
Flow Cytometry

Flow cytometric analysis of Hela cells using BTRC mouse mAb (green) and negative control (red).



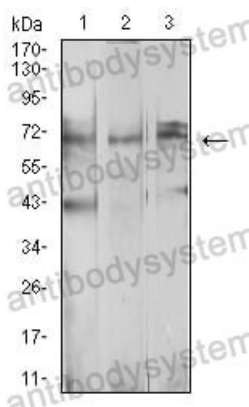
Immunohistochemical

Immunohistochemical analysis of paraffin-embedded human esophageal cancer tissues using BTRC mouse mAb with DAB staining.



Immunohistochemical analysis of paraffin-embedded human rectum cancer tissues using BTRC mouse mAb with DAB staining.

Immunohistochemical



Western blot analysis using BTRC mouse mAb against Ramos (1), MCF-7 (2), and K562 (3) cell lysate.

Western blot