

Anti-ANAPC1 Antibody (R4B57)

Summary

Catalog No.	RHN96201
Clone ID	R4B57
Host species	Mouse
Tested applications	ELISA: 1:10000, FCM: 1:200-1:400
Species reactivity	Human
Form	Liquid
Storage buffer	0.01M PBS, pH 7.4, 0.05% Sodium Azide.
Concentration	1 mg/ml
Purity	>95% as determined by SDS-PAGE.
Clonality	Monoclonal
Isotype	IgG1
Applications	ELISA, FCM
Target	Anaphase-promoting complex subunit 1, TSG24, Cyclosome subunit 1, APC1, Testis-specific gene 24 protein, Mitotic checkpoint regulator, ANAPC1
Purification	Protein A/G purified from cell culture supernatant.
Endotoxin level	Please contact with the lab for this information.
Accession	Q9H1A4

Stability and Storage

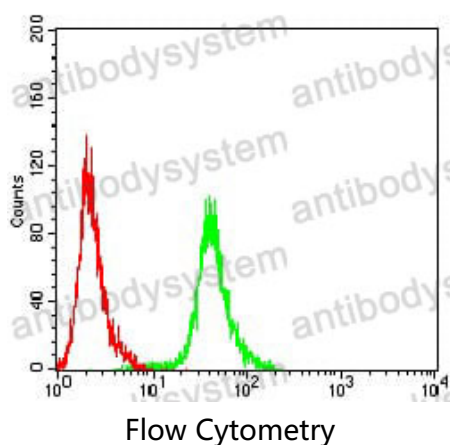
Use a manual defrost freezer and avoid repeated freeze-thaw cycles.

Store at 4°C short term (1-2 weeks). Store at -20°C 12 months. Store at -80°C long term.

Note

For research use only.

Data Image



Flow cytometric analysis of MCF-7 cells using ANAPC1 mouse mAb (green) and negative control (red).