

Anti-KDM2B Antibody (R4B35)

Summary

Catalog No.	RHN94902
Clone ID	R4B35
Host species	Mouse
Tested applications	ELISA: 1:10000, FCM: 1:200-1:400, WB: 1:500-1:2000
Species reactivity	Human
Form	Liquid
Storage buffer	0.01M PBS, pH 7.4, 0.05% Sodium Azide.
Concentration	1 mg/ml
Purity	>95% as determined by SDS-PAGE.
Clonality	Monoclonal
Isotype	IgG2b
Applications	ELISA, FCM, WB
Target	JmjC domain-containing histone demethylation protein 1B, PCCX2, F-box/LRR-repeat protein 10, Jumonji domain-containing EMSY-interactor methyltransferase motif protein, F-box protein FBL10, F-box and leucine-rich repeat protein 10, CXXC-type zinc finger protein 2, [Histone-H3]-lysine-36 demethylase 1B, JHDM1B, FBXL10, NDY1, Protein-containing CXXC domain 2, Lysine-specific demethylase 2B, FBL10, Protein JEMMA, KDM2B, CXXC2
Purification	Protein A/G purified from cell culture supernatant.
Endotoxin level	Please contact with the lab for this information.

Recombinant Proteins & Antibodies

Accession

Q8NHM5

Stability and Storage

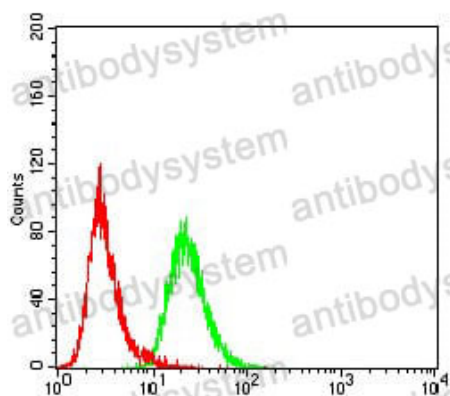
Use a manual defrost freezer and avoid repeated freeze-thaw cycles.

Store at 4°C short term (1-2 weeks). Store at -20°C 12 months. Store at -80°C long term.

Note

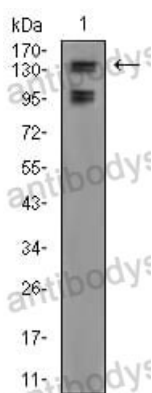
For research use only.

Data Image



Flow Cytometry

Flow cytometric analysis of HeLa cells using FBXL10 mouse mAb (green) and negative control (red).



Western blot

Western blot analysis using FBXL10 mouse mAb against A549 (1) cell lysate.