

Anti-KDM2B Antibody (R4B34)

Summary

Catalog No.	RHN94901
Clone ID	R4B34
Host species	Mouse
Tested applications	ELISA: 1:10000, FCM: 1:200-1:400
Species reactivity	Human
Form	Liquid
Storage buffer	0.01M PBS, pH 7.4, 0.05% Sodium Azide.
Concentration	1 mg/ml
Purity	>95% as determined by SDS-PAGE.
Clonality	Monoclonal
Isotype	IgG2b
Applications	ELISA, FCM
Target	JmjC domain-containing histone demethylation protein 1B, PCCX2, F-box/LRR-repeat protein 10, Jumonji domain-containing EMSY-interactor methyltransferase motif protein, F-box protein FBL10, F-box and leucine-rich repeat protein 10, CXXC-type zinc finger protein 2, [Histone-H3]-lysine-36 demethylase 1B, JHDM1B, FBXL10, NDY1, Protein-containing CXXC domain 2, Lysine-specific demethylase 2B, FBL10, Protein JEMMA, KDM2B, CXXC2
Purification	Protein A/G purified from cell culture supernatant.
Endotoxin level	Please contact with the lab for this information.

Recombinant Proteins & Antibodies

Accession

Q8NHM5

Stability and Storage

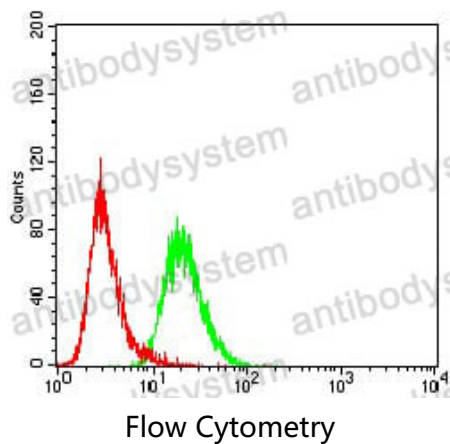
Use a manual defrost freezer and avoid repeated freeze-thaw cycles.

Store at 4°C short term (1-2 weeks). Store at -20°C 12 months. Store at -80°C long term.

Note

For research use only.

Data Image



Flow cytometric analysis of HeLa cells using FBXL10 mouse mAb (green) and negative control (red).