

# Anti-PRDM5 Antibody (R4B32)

## Summary

---

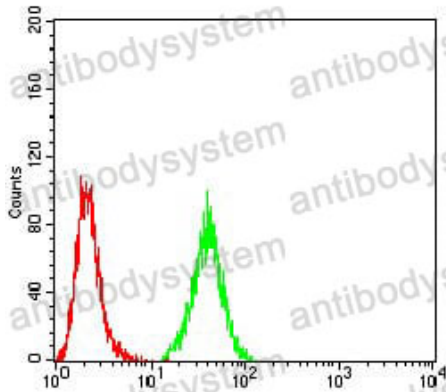
<b>Catalog No.</b>	RHN94801
<b>Clone ID</b>	R4B32
<b>Host species</b>	Mouse
<b>Tested applications</b>	ELISA: 1:10000, FCM: 1:200-1:400, IF: 1:100-1:500, WB: 1:500-1:2000
<b>Species reactivity</b>	Human, Mouse
<b>Form</b>	Liquid
<b>Storage buffer</b>	0.01M PBS, pH 7.4, 0.05% Sodium Azide.
<b>Concentration</b>	1 mg/ml
<b>Purity</b>	>95% as determined by SDS-PAGE.
<b>Clonality</b>	Monoclonal
<b>Isotype</b>	IgG1
<b>Applications</b>	ELISA, FCM, IF, WB
<b>Target</b>	PR domain-containing protein 5, PFM2, PR domain zinc finger protein 5, PRDM5
<b>Purification</b>	Protein A/G purified from cell culture supernatant.
<b>Endotoxin level</b>	Please contact with the lab for this information.
<b>Accession</b>	Q9NQX1
<b>Stability and Storage</b>	Use a manual defrost freezer and avoid repeated freeze-thaw cycles. Store at 4°C short term (1-2 weeks). Store at -20°C 12 months. Store at -80°C long term.

**Note**

For research use only.

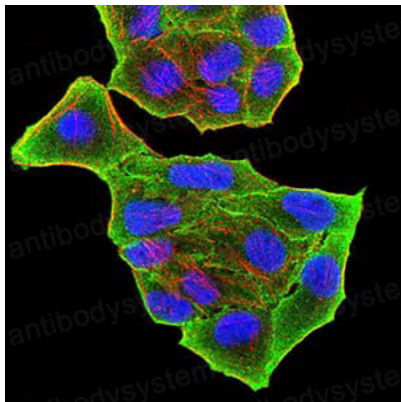
## Data Image

---



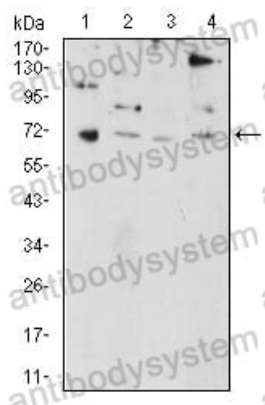
Flow Cytometry

Flow cytometric analysis of HeLa cells using PRDM5 mouse mAb (green) and negative control (red).



Immunofluorescence

Immunofluorescence analysis of MCF-7 cells using PRDM5 mouse mAb (green). Blue: DRAQ5 fluorescent DNA dye. Red: Actin filaments have been labeled with Alexa Fluor- 555 phalloidin.



Western blot

Western blot analysis using PRDM5 mouse mAb against HL-60 (1), NIH/3T3 (2), SW480 (3), and HEK293 (4) cell lysate.